

# NEWSLETTER



## KEY VALUES



RESPECT  
YOURSELF



RESPECT  
OTHERS



RESPECT LEARNING &  
ENVIRONMENT

LAS NEWSLETTER  
ISSUE 1, TERM 1  
**February 2025**

## PRINCIPAL'S REPORT

Welcome back to the 2025 school year! I hope that everyone had a fantastic holiday, and you were able to do some of the things that you love to do as well as spending time with your family and friends. I trust that everyone will be keen to get back into the swing of school and that everyone is really looking forward to the year ahead. I would like to extend a very warm welcome to all of our new learners, new staff and the many families who have joined the Lucindale Area School community for 2025.

The start of the school year is a special time—a time to reconnect with familiar faces, make new friends, and dive into a world of knowledge and exploration. I want to share a few thoughts and reminders to help ease the transition back into the rhythm of school life:

### **1. Embrace the Excitement:**

Reconnect with friends, share stories, and look forward to making new memories together. The energy and enthusiasm that fill our school are the building blocks for a fantastic school year.

### **2. Set Positive Intentions:**

Encourage your child to set positive intentions for the upcoming year. Whether it's a commitment to kindness, a dedication to hard work, a promise to try new things, a positive mindset sets the stage for success.

### **3. Prepare for Success:**

A good night's sleep and a hearty breakfast are key ingredients for a successful day of learning.

### **4. Celebrate Achievements:**

Take a moment to acknowledge and celebrate your child's achievements from the previous year. Reflecting on past successes can boost confidence and motivate students to reach even greater heights.

CONTINUED.....

### **5. Open Lines of Communication:**

Our doors are always open. If you have any questions, concerns, or if there's anything you'd like to discuss, please don't hesitate to reach out. We are here to support your child's academic and emotional well-being.

### **6. Engage in the Learning Journey:**

Encourage curiosity and a love for learning. Engage in conversations with your child about their day, the subjects they enjoy, and the exciting things they're looking forward to discovering.

### **7. Connect with the Community:**

Attend school events, join parent-teacher organisations, and participate in activities. Building a strong sense of community enhances the overall school experience for both students and their families.

At Lucindale AS we are committed to providing a nurturing and inspiring learning environment where each child can flourish. Let's work together and make this school year a memorable chapter in your child's educational journey. As we kick off the academic year, I want to express my gratitude for your ongoing support and partnership. Here's to a year filled with joy, growth, and success for every child.

## **LUCINDALE AREA SCHOOL FACEBOOK**

Don't forget to like us or follow us on Facebook to receive real time highlights of what's happening in our great school.

## **PROCEDURE FOR STUDENTS TO LEAVE SCHOOL EARLY**

At times throughout the school week families may need to authorise a student to leave the school grounds or supervision of the school during school hours. Parents/Caregivers need to call or email the school to arrange for a student to have permission to be out of school during school hours.

According to advice from the Department for Education for parents/caregivers, justified reasons for student absence (whole day or partial day) may include:

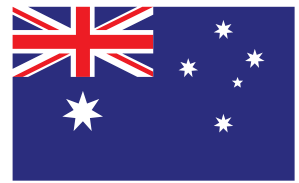
1. Being sick, or having an infectious disease
2. Having an unavoidable medical appointment
3. Exceptional or urgent family circumstances (e.g. attending a funeral)

Principals may decline to accept an explanation that you have provided if they do not believe the absence is in the best interest of the child. Please feel free to contact the school to discuss situations specific to your family.

## AUSTRALIA DAY

At the Australia Day celebration in Lucindale on Sunday, 26 January our School Captains Jacob and Stella

**Louis de Jager, Principal**



Jacob, Louis de Jager and Stella representing LAS at the Australia Day ceremony.

## CHAPLAINCY

Hi! I'm Mrs B.

It is a privilege to be your Pastoral Care Worker.

I am a trained Primary School teacher, working at Ceduna before coming to Naracoorte to work at Naracoorte Primary School and then Sunrise Christian School.

I live in Naracoorte with my husband Micheal and our Jack Russell, Stitch.

Our daughter, Emma works at the Newcastle University as a Research Assistant and our son, Matthew works at Waverly Christian College while he completes a Master of Teaching.

I love dogs and eating chocolate. I also enjoy reading, writing, walking and dancing.

My regular days at school are Tuesdays and Thursdays.

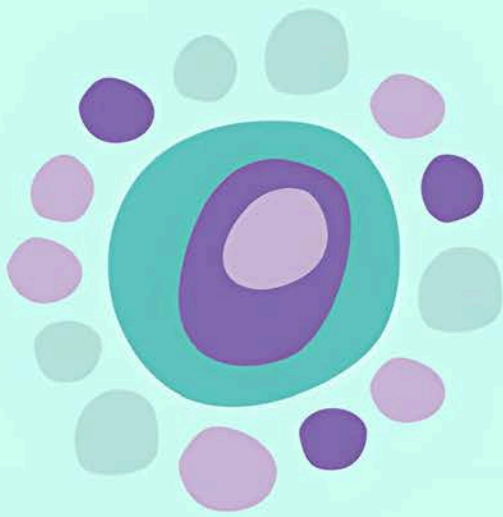
You can contact me by ringing the school office on 87662084 or by leaving a message at the office.

I look forward to serving you.

Blessings,

Leanne Becroft 😊

Week	Monday	Tuesday	Wednesday	Thursday	Friday
2	3 February	4	5	6	7 Student Free Day
3	10	11	12	13	14
4	17	18	19 • Yr 7 Camp Tarooki	20 • Yr 7 Camp Tarooki • Lions Youth of the Year	21 • Yr 7 Camp Tarooki 22 • Lucindale Show
5	24	25 • Headspace Yr 7-12 • Governing Council Meeting 6.30pm	26 • LAS Distance Day	27	28 • LAS Sports Day
6	3 March	4	5	6	7 • Clean Australia Up Day
7	10 Public Holiday Adelaide Cup	11 • Space to Dream Exhibition	12 • NAPLAN Start	13 • School Photos - Frank Monger	14 • Interschool Sports Kangaroo inn
8	17	18	19	20	21 • South East Field Days 21 • South East Field Days



Inclusive Teaching & Learning

# SIES



Government of South Australia  
Department for Education

## INCLUSIVE TECHNOLOGY INFORMATION SESSION

The Department's Statewide Inclusive Education Services (SIES) will be hosting an Inclusive Technology information session via Microsoft Teams (scan the code below).

If you're a parent or carer of a student with disability at a Department School, you are invited to the session with SIES staff to learn more about technology that may be available.



THURSDAY  
20TH FEBRUARY 2025



10AM - 11AM



Scan code here



8235 2871



[sies.admin@schools.sa.edu.au](mailto:sies.admin@schools.sa.edu.au)



[www.SIES.sa.edu.au](http://www.SIES.sa.edu.au)



# GOVERNING COUNCIL

## MAKE YOUR VOICE HEARD AT LUCINDALE AREA SCHOOL.

### JOIN THE GOVERNING COUNCIL.

Do you care about the future of Lucindale Area School and want to actively shape its direction? We're seeking passionate people to join our Governing Council!

#### **What is the Governing Council?**

The Governing Council plays a vital role in shaping the direction of our school in partnership with the Principal. Key responsibilities include:

- Providing a forum for parents and the community to contribute to school governance
- Strategic planning, including setting and reviewing school objectives and policies
- Managing financial resources and overseeing the school budget
- Ensuring school facilities are well-maintained and meet student needs
- Supporting initiatives that enhance student education, wellbeing and development

#### **Why should you join?**

- **Make a difference:** Your voice and ideas matter! Be directly involved in shaping the school environment for both current and future generations.
- **Gain valuable experience:** Learn about school governance, budgeting and educational leadership in a supportive and collaborative setting.
- **Connect with the community:** Network with other parents, teachers, and staff, fostering a stronger sense of belonging and shared purpose.

#### **Commitment:**

Attend 2 meetings per term (evenings, approx. 2 hours each).

Serve a 2-year term (with the option to renew).

#### **Interested?**

We encourage applications from parents, caregivers and community members with diverse backgrounds and experiences. For more information please contact Governing Council Chairman, Tim Kiefel on 0428 997 336 or Secretary, Trish Koch on 0413 868 880.

#### **AGM to be held Tuesday 25th March 2025 at 6:30pm.**

Nominations can be submitted to Principal Louis de Jager prior to the meeting.

## ANNUAL GENERAL MEETING

Tuesday 25th March 2025, 6:30pm – LAS

I \_\_\_\_\_ (full name)  
of \_\_\_\_\_ (address)

### Nominate

\_\_\_\_\_ (full name)  
of \_\_\_\_\_ (address)

**to be elected as a member of Lucindale Area School Governing Council**

I \_\_\_\_\_ (full name)  
of \_\_\_\_\_ (address)

accept the nomination and hereby declare that:

- I have not been declared bankrupt and do not receive a benefit of a law for the relief of insolvent debtors.
- I have not been convicted of any offence of dishonesty, or of a sexual nature involving a minor, or of violence against a person.
- I understand that should I be declared bankrupt, receive a benefit of law for the relief of insolvent debtors or be convicted of any of the offences listed my membership of Lucindale Area School Governing Council will cease.
- I understand that if elected to Governing Council, I will be required to undergo a Police Check that will be paid for by the school.

**All nominations for Governing Council must be submitted to the Principal, Louis de Jager prior to the 2025 AGM.**

# SOUTH EAST FIELD DAYS



## Showtime for School Spirit!

### Volunteer at Lucindale Field Days & Support Our Students!

The South East Field Days are just around the corner, and it's time to **embrace our school motto: "School & Community Working Together!"** This year, you can make a real difference by volunteering at the event.

#### Here's the win-win-win:

- Support the community: The Lucindale Lions Club will donate to our school based on our volunteer efforts. This money will go directly to **funding a project chosen by the students themselves!**
- **Support our school:** By volunteering no more than **2.5 hours** on **Friday 21st or Saturday 22nd March**, you'll be helping ensure a smooth and successful event for everyone.
- **Support yourself:** As a thank you, you'll receive **free admission to the Field Days!** Enjoy a fun-filled day with family and friends whilst knowing you've made a positive impact.

We need your help! We're looking for volunteers to fill various roles, including:

- Car park attendants
- Gate attendants
- EFTPOS operators (prior experience preferred)

An EdSmart email slip will be circulated within the next two weeks asking you to register your availability to secure your preferred time slot. If you wish to know more, contact Governing Council Secretary Trish Koch on **0413 868 880** or by email **trish@trishkbooks.au**.

**Together, let's show our community spirit and make this year's Field Days a roaring success!**

## SPORTS POLO



The Lucindale Area School Sports Polo is now available via [www.madeforschool.com.au](http://www.madeforschool.com.au) for Year 7-12 students.

*\*Note\** These are only to be worn during scheduled PE lessons. Students must be in LAS School approved uniform at all other times during the school day.



# SHEEP EXPO



2025 SA SHEEP EXPO

»»    
Follow us on  
/sasheepexpo

## NOW OPEN 2025

Focusing on the Ewe

 14 - 16 APRIL  
 ADELAIDE SHOWGROUND, SA  
 [sasheepexpo.com.au](http://sasheepexpo.com.au)

The SA Sheep Expo empowers and equips today's youth to become tomorrow's leaders. It brings young sheep enthusiasts together to discuss and learn about the skills and techniques needed to run successful and sustainable stud and commercial enterprises. The expo also provides exposure to career opportunities in the industry and highlights the various pathways available.



Registrations now open - don't miss out!  
**2025 Registrations**

The Lucindale Lions Shears Committee are proud to be offering financial sponsorship to selected Lucindale Area School students who would like to attend the 2025 SA Sheep Expo 14-16th April.

To be in the running to receive this sponsorship, students need to write a short letter explaining why they would like to attend the Sheep Expo and how they believe it will benefit them in their future career. These must be submitted to the school front office by 17th February.

Many thanks to the Lucindale Lions Shears Committee for their brilliant support of our students in the sheep industry. Please see the advertisement for more information on the SA Sheep Expo. Please note the SA Sheep Expo is capping registration numbers to the first 170 students – so get in quick!

## Let's Get Ready!

### REGISTRATION



**LIBRARY**



The SA Sheep Expo empowers and equips today's youth to become tomorrow's leaders.

The expo brings young sheep enthusiasts together to discuss and learn about the skills and techniques needed to run successful and sustainable stud and commercial enterprises. The expo also provides exposure to career opportunities in the industry and highlights the various pathways available.

Scan the QR code to register or visit [www.sasheepexpo.com.au](http://www.sasheepexpo.com.au) for more information.



14 - 16 APRIL 2025

# SCHOOL CARDS

School Card Applications for 2025 are now open.

Please see link to check eligibility and apply online.

[SA.GOV.AU](http://SA.GOV.AU) - School Card scheme

## DISTANCE DAY

Distance Day will be held on  
**Wednesday 26th February 2025.**

**Time: 9.00am**

**All welcome**



# YEAR 12



Year 12 students have received their Senior jumpers. They were designed by Harmony who collaborated with other students in their creation.

# CANTEEN

## IT SUPPORT

IT support will be provided on Mondays

and Thursdays in Term 1.

Please find below the details for your scheduled ESP Tech visits at Lucindale Area School for the upcoming Term 1, 2025.

Tech: Sarah Trussell

Regular visit from Week 2

Day: Monday and Thursday

Frequency of visit: Weekly

Welcome back to the school year. I'd just like to say thank you to the School Community for the warm welcome. We have lots of new and exciting things coming for the canteen this year. There will be some new products added to QKR over the coming weeks.

Watch this space for our upcoming specials and new products.

Slushie's this year will be available term 1 and 4 on Friday's and available on extra hot days. This year we will only have a small size available for a \$1.00

We are always looking for parent and grandparent volunteers to help out on fridays and school events. If you're available to help out please feel free to contact the canteen committee.

Many Thanks

**Samantha Vearing**



# CFS DAY



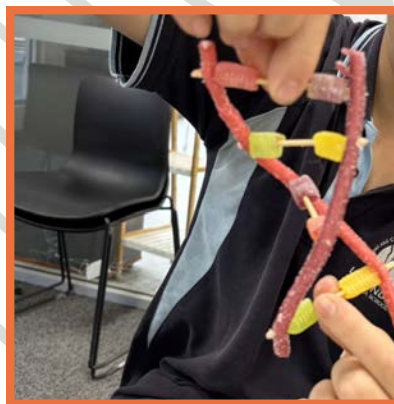
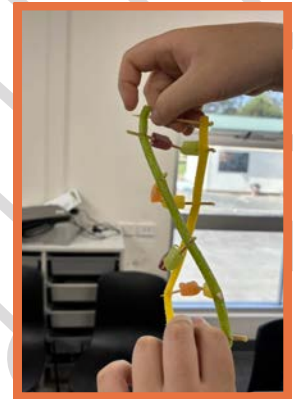
In Term 4 last year some of the Primary students were lucky enough to learn about the CFS equipment that the Lucindale Brigade use in emergency situations. The students had a great time and experienced holding and using some of the main equipment on the fire trucks. Thanks to the Lucindale CFS members who gave up their time to come into the school.



# YEAR 10 SCIENCE - DNA 3D MODEL WITH LOLLIES

Simi Liu

In our recent Science lesson, students explored the structure of DNA by creating 3D models using lollies. This hands-on activity helped them visualise how DNA strands twist into a double helix and understand the pairing of bases. It was a fun and engaging way to connect Biology



# LIBRARY



Welcome back for 2025, and welcome to all of our new families.

The Lucindale School Community Library is situated on school grounds, and is open to the public, staff and students. All students are issued with a membership when they enrol at Lucindale Area School, or if already a member, their membership transfers to Lucindale. All student library cards are kept on file in the Library admin area.

The Library is a member of SA Public Libraries, and as such a member of the One Card system. This allows members online access to borrowing from any SA Public Library. Items from any SA Public Library may also be returned to the Lucindale School Community Library.

## Scholastic Book Club

The school actively promotes Scholastic Book Club. Any purchase made by our families earns a % of money credited directly to the school to spend at Scholastic. These credits are used to purchase student prizes for Book Week, and classroom resources. Thank you for supporting our school when you make a purchase. Orders for Issue 1 are due online by 17th February 2025.



## Premier's Reading Challenge

Our primary students are encouraged to participate in the Premier's Reading Challenge.

This is co-ordinated by home group teachers. More details to come later in the term.



## Opening hours to the public are:

Monday 9:00am – 4:00pm  
Tuesday 9:00am – 4:00pm  
Wednesday 9:00am – 5:00pm  
Thursday 9:00am – 5:00pm  
Friday 9:00am – 4:00pm  
Saturday 9:00am – 11:30am

All visitors welcome during public opening hours.

I look forward to meeting you soon.

The library opens at 8:30am Monday to Friday to staff and students only.

Kerena Simpson, Library Manager



# Year 9 Blue

Simi Liu - Home Group Teacher

## Classroom

This term, the Year 9 Blue class added creative touches to our classroom door to make it more inviting.

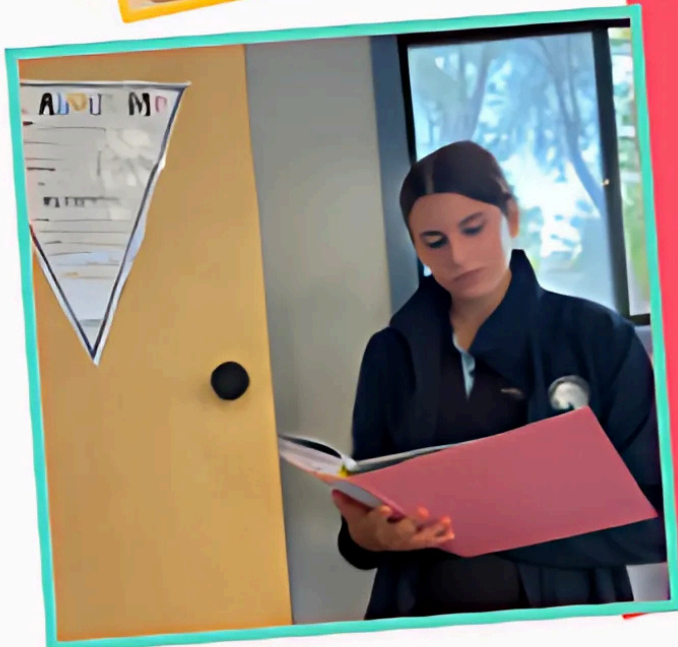


## Responsibility

Year 9 Blue has been doing a great job looking after our class plant. It's looking healthy and well cared for.

## Learning

It's also been lovely seeing students take a moment to read learning materials!



# PASTORAL CARE -TEAM BUILDING



On Wednesday of Week 1, Secondary students attended their first Pastoral Care lesson for the year. These weekly lessons will have a specific focus around personal growth and development. The first session focused on team building, with future lessons to focus on personal development, as well as assemblies to celebrate success.

Students completed a series of activities, with the goal of working with different students across years 7-12 to complete a team objective. A number of triumphs occurred, with each team successfully completing all of the challenges, and a number of students taking leadership initiatives.

Students reported their enjoyment of the session, and we look forward to more of them as the year rolls out.

**Alex Dakiniewicz**  
Wellbeing Coordinator

# RECEPTION

**This year we have 8 new Reception students joining our class. We will also have some students starting mid-year (Term 3).**

**Here are the thoughts of their first week of school:**

**Spencer: I like making maps with Mrs Parkins.**

**Dusty: I like coming to school on the bus. I like colouring.**

**Blake: I like drawing and going outside.**

**Flo: I love playing with my friends. We are making a map with Mrs Parkins.**

**Lou: I like playing with Sofia and playing with the Octonauts.**

**Rosie: At school I like to see my sister and I like the toys that we can play with in the morning.**

**Hallie: I like to play inside in the morning and outside at Recess. I like writing.**

**Sofia: I like playing with toys when I get to school. I like colouring.**

**Felicity Jenke, R/1 Homegroup Teacher**



# YEAR 5/6 PHYSICAL EDUCATION

This term we will be focusing on getting ready for Sports Day. We will try and cover all field and track events so students are as prepared as they can be. If there are any parent volunteers, you are more than welcome to contact me via email. [Sharon.Kriek854@schools.sa.edu.au](mailto:Sharon.Kriek854@schools.sa.edu.au)

We will also be looking at something new, Rounders. It is a lot like Baseball so hopefully we will have a lot of fun. This week we enjoyed some other types of indoor Physical Education; I could not bring myself to take the students out in the scorching weather 😊.



125<sup>TH</sup>

A great family fun day!

# Lucindale Show

**SATURDAY  
22ND FEBRUARY 2025**

**HORSES IN ACTION  
CONTINUING ON SUNDAY 23<sup>RD</sup>**

## 2025 Show day attractions:

- Horses In Action Saturday & Sunday
- Unlimited show rides - \$25 per child for 5 hours Or \$5 per ride
- Rev it up Racing - \$5 per race or \$20 for day pass
- Show bags
- Face painting
- Toddler play area
- Indoor exhibits
- Trade sites
- Wool display
- Full catering
- Indoor exhibits


 Bendigo Bank

Community Bank  
Ride & Drive



Naracoorte Lucindale Council  
Better by Nature






# PORTRAIT WORKSHOP

**ART GALLERY**  
Naracoorte Regional

Learn to draw a face  
AGES 5 TO TEENS \$12



**SUNDAY 9TH MARCH**  
**1.30-3PM**

ALL MATERIALS PROVIDED - BRING A PHOTO

BOOKINGS ESSENTIAL 8762 3390  
NARACOORTEGALLERY@GMAIL.COM  
WWW.NARACOORTEARTGALLERY.COM.AU

# PORTRAIT WORKSHOP

Create a colourful, original portrait for display on a kids and teens portrait wall at the gallery. Bring a photo of yourself, or anyone else.

Instruction by Ursula Smith & Julie Earl on how to improve your portrait drawing skills.

This will run in conjunction with artist Ron Penrose's "Recognition" exhibition - Portraits of local identities.

Little kids, please bring an adult

Following this, until Sunday 13th April, materials will be available to use at the Gallery to create portraits for display in the Bainger Gallery.

Works to be collected after Sunday 13th April.

# SAVE THE DATE!

LIONS CLUB OF NARACOORTE PRESENTS

# TASTE FESTIVAL

THE LIMESTONE COAST

NARACOORTE

**15TH FEBRUARY, 2025**  
TOWN SQUARES, NARACOORTE

FEATURING

**SUBURBAN HENRY AND SHAUN BROWN**

**FOOD • BEER • GIN • WINE • MUSIC**

TICKETS AVAILABLE TO PURCHASE VIA HUMANITIX.COM  
FOR MORE INFORMATION ON THE FESTIVAL, AND NARACOORTE HEAD OVER TO  
WWW.NARACOORTERA.COM.AU

# Create a Welcome Lei, Sustainably

WITH **Lauren Simeoni**

**Sunday 23 February 2025**  
10am - 1pm  
For ages 12+ | Price: \$20  
Naracoorte Regional Gallery



Join us for an afternoon of art, ideas, crafting and lots of fun with exhibiting Adelaide contemporary jeweller **Lauren Simeoni**.

Lauren will guide you through experimenting with making jewellery using found objects, deconstructed sustainable materials and new simple 'low-fi' techniques.

No experience in jewellery-making required, just a keenness to create, share ideas and have fun!

**What to bring:**

- Recyclable materials for a shared table. Such as clean bottle tops, plastics, foil, used wrapping papers, fabric, string and/or natural materials (eg, dry leaves, bark, seed pods)
- Any favourite crafting hand tools you may have
- Sketchbook and drawing implements optional
- Safety glasses if you have a pair
- BYO extra drinks and/or snacks.

Some crafting tools, materials and safety glasses will be supplied. Please note, participants are required to wear closed-toe shoes.

**BOOKINGS**  
In person: Naracoorte Regional Gallery  
Email: naracoortegallery@gmail.com  
Call: 8762 3390

