

Naracoorte Lucindale

AND SURROUNDS



Contents

Welcome	3
Regional map.....	4
Getting here.....	5
Limestone Coast Map.....	6
Naracoorte Town Map.....	8
Essential information.....	10
Explore our towns	
Naracoorte.....	12
Naracoorte Historic Precinct.....	14
Lucindale	16
Back Roads.....	20
Natural experiences, wetlands and wildlife.....	22
World Heritage Naracoorte Caves	26
Gallery, Public Art & Heritage.....	30
Events Calendar.....	32
Outdoor fun and recreation	36
Wrattonbully Wine Region.....	42
Eat, Drink & Stay	45
Food and Wine.....	46
Accommodation.....	52
Shopping	59
Our neighbours.....	68



Naracoorte Lucindale is in the heart of South Australia's hidden treasure, the Limestone Coast, midway between Adelaide and Melbourne.

The Naracoorte Lucindale story began when the ocean began to recede approximately one million years ago, leaving a landscape of ranges and wetlands, ancient soils, caves and underground reservoirs.

Naracoorte Lucindale is rich with hidden gems above and below the surface, waiting to be explored. Be captivated by world significant natural wonders and abundant wildlife, including the World Heritage Naracoorte Caves and Bool Lagoon. There's the fertile green landscapes rich with vineyards and lush farmland. And then there is a mosaic of unique towns; each rich with stories and brimming with character.

Unearth the treasures of Naracoorte Lucindale and the Limestone Coast.

f *See what's happening in Naracoorte Lucindale & surrounds today!*



Naracoorte Lucindale Council
Better by Nature



Naracoorte
Business Association



Regional Map



Naracoorte to:	Distance	Time
Adelaide	333 km	3.40 hrs
Melbourne (Vic)	450 km	5.30 hrs
Apsley (Vic)	32 km	0.20 hrs
Bordertown	82 km	0.50 hrs
Coonawarra	40 km	0.30 hrs
Halls Gap (Vic)	220 km	2.40 hrs
Hamilton (Vic)	170 km	2.00 hrs
Horsham (Vic)	145 km	1.50 hrs
Keith	109 km	1.15 hrs
Kingston SE	100 km	1.05 hrs
Lucindale	42 km	0.30 hrs
Mount Gambier	101 km	1.05 hrs
Penola	50 km	0.35 hrs
Portland (Vic)	205 km	2.20 hrs
Robe	115 km	1.15 hrs

Climate

A gentle, Mediterranean climate, Naracoorte and Lucindale offer cool crisp winters and warm to hot summers.

	Spring	Summer	Autumn	Winter
Average temperatures	7°C min. to 21°C max.	11°C min. to 29°C max.	8 °C min. to 22 °C max.	5°C min. to 15°C max.
Average monthly rainfall	40mm	27mm	30mm	61mm

Time zone

South Australia operates on Australian Central Standard Time (ACST) from April through to the end of September and Central Daylight Time (ACDT) during October to March. (Check www.safework.sa.gov.au and search 'daylight saving' for exact changeover dates and times.)

Visitors travelling from Victoria need to wind clocks back by half an hour when entering South Australia.

Getting Here

Naracoorte Lucindale is the perfect self-drive destination. Naracoorte, the centre of the district, is located approximately 330 kilometres from Adelaide and 450 kilometres from Melbourne; the perfect getaway from either direction.

From Victoria by car

From Victoria, enter the district via the Wimmera Highway from Horsham or through Casterton and Penola from Hamilton. If you're touring the Great Ocean Road, you can reach the Naracoorte Lucindale area via Mount Gambier.

From Adelaide by car

There are two options: the inland or coastal route. The inland route takes you via National Highway 1, follow the Dukes Highway and then head south onto the Riddoch Highway. Along the way stop at The Bend Motorsport Park, view the 30m silo mural at Coonalpyn or ride the monorail at Keith. Alternatively enter the district via the Princes Highway from the Coast and take in the sights of one of Australia's most environmentally significant areas, the Coorong.

From the Limestone Coast by car

If you're already in the Limestone Coast, Naracoorte is never far away:

- From Penola (50km) and Mount Gambier (103km) follow the Riddoch Highway north
- From Robe (113km) take the Southern Ports Highway and then the Konetta and Lucindale Roads
- From Kingston (101km) take the Princes Highway and Avenue Range and Lucindale Roads

- From Keith (109km) follow the Riddoch Highway south
- From Millicent (101km), head north west to Penola and take the Riddoch Highway north
- From Beachport (114km), take the Southern Ports Highway, then briefly hop onto the Princes Highway before taking the Konetta and Lucindale Roads

Take a coach

If you'd like someone else to drive, Premier Stateliner operates a coach service between Adelaide and Mount Gambier via either an inland or coastal route.

For more information visit www.premierstateliner.com.au

V-Line runs a daily service from Melbourne to Mount Gambier. For more information visit www.vline.com.au

Or fly instead

For a bird's-eye view of the Limestone Coast, flights to Mount Gambier operate daily from both Melbourne and Adelaide with Regional Express (REX).

Please note: there are limited public transport options once you get to the Limestone Coast. Hire cars are available from Mount Gambier.

Drive safely

While the Limestone Coast is the perfect self-drive destination, we want you to stay safe on the roads. Take care, stay on the left hand side and obey the speed limits. Plan regular stops to make the most of our wonderful region and all it has to offer.



the LIMESTONE COAST

unearth our treasures

Major - Sealed

Secondary - Sealed

Minor - Sealed

Minor - Unsealed

23 Kilometres

NOV 2022, © Custom Mapping Services

	Visitor Information Centre		Fishing
	Outlet		Golf Course
	Airport/Airfield		Jetty/Boardwalk
	Bird Watching		Lighthouse
	Boat Ramp		Marina
	Camping Area		Photo Opportunity
	Caravan Park		Picnic Area
	Cellar Door		RV Dump Point
	Dive Spot		Surfing
	Whale Watching		



Naracoorte Lucindale Council
Better by Nature





Essential information

Fruit Fly Warning

South Australia remains the only Australian mainland state that is free of fruit fly. If you are entering South Australia and are carrying fruit or vegetables, please eat it or place in the quarantine bins located on the Wimmera Highway approximately 5km from the SA/Vic border. Motorists are subject to random inspections and fines may apply.

Phylloxera

The wine industry and grape growing are vital elements of our economy. It is vitally important that you observe the ban on bringing grapes, vines or contaminated equipment into South Australia.

Emergency

Ambulance/Fire/Police.....000
Naracoorte Police.....66 Smith St, (08) 8762 0466
Lucindale Police.....Musgrave Ave, (08) 8766 2200
Naracoorte Hospital.....101 Jenkins Tce, (08) 8762 8100

Medical Clinic

Kincaig Medical Clinic.....6 Cedar Ave, (08) 8762 7700
Naracoorte General Practice.....102-106 Smith St
.....(08) 8762 8800

Car Rental

AVIS.....257 Smith Street (08) 8723 4300
Cappa's.....257 Smith Street

Chiropactors

Biomechanic Chiropractic...180 Smith St, (08) 8762 0200
Naracoorte Chiropractic...1 Robertson St, (08) 8762 0255

Naracoorte Dental Clinics

Naracoorte Dental Clinic...188 Smith St, (08) 8762 3333
SE Dental Clinic.....44A Robertson St, (08) 8762 1449

Pharmacies

Kincaig Terry White Chemmart.....110 Smith St
.....(08) 8762 2158
Naracoorte Direct Chemist Outlet.....100 Smith St
.....(08) 8762 2212

Physiotherapists

Naracoorte Physiotherapy Clinic.....
.....101 Jenkins Tce, (08) 8762 8130
Good Country Physiotherapy.....
.....157 Smith St, (08) 8762 1515

Optometrists

Kevin Paisley Eyewear....22 Ormerod St, (08) 8762 3199
Laubman & Pank.....18 Ormerod St, (08) 8762 0711

Veterinary Clinics

Naracoorte & Penola Veterinary Centre82 Stewart Tce
.....(08) 8762 1955
Rural Veterinary Services.....Gordon St, (08) 8762 1885

Roadside Service

RAA.....13 11 11

Taxis

Naracoorte Taxis.....13 10 08, (08) 8762 4111



Post Offices

Naracoorte	23 Ormerod St, 13 13 18
Lucindale	107 Musgrave Ave, (08) 8766 2020
Frances	Lot 1 Second Ave, (08) 8765 1071



We are RV Friendly Waste points

Naracoorte Showgrounds	Smith St
Yakka Park (South East Field Days site)	Lucindale
Black Cockatoo Bush Camp	Chapples Rd
Naracoorte Big 4 Holiday Park	Park Tce
Frances Recreation Ground	Second St (East Tce), Frances

Parking

Lucindale	Musgrave Ave
Naracoorte	Robertson St
	Smith St (North side, east of DeGaris Place)
	MacDonnell St (Market Square carpark)

Public Toilets

NARACOORTE

Town Square	Bank Pl
Naracoorte VIC	36 MacDonnell St
Market Square Playground	MacDonnell St
Lions Pioneer Park	MacDonnell St
Kincraig Plaza Shopping Centre	Robertson St
Memorial Parklands	Price Ave

LUCINDALE

Centenary Park	Musgrave Ave
The Lucindale Oval	Centenary Ave



Naracoorte Visitor Information Centre

The best place to gather local intelligence on events, activities and attractions and brochures and maps.

The Naracoorte Visitor Information Centre integrated with the Sheep's Back Museum, has a wonderful range of reasonably priced locally made goodies to take home or give as genuine Australian gifts.



Naracoorte Visitor Information Centre

36 MacDonnell St, Naracoorte • Ph (08) 8762 1399
www.naracoortelucindale.com

Open Monday to Friday 9am to 5pm.
Saturday, Sunday and public holidays 10am-4pm.
Closed Christmas Day and Good Friday.



Lucindale Visitor Information

32 Musgrave Ave, Lucindale • Ph (08) 8766 2002

Public internet access

Naracoorte Library 93-95 Smith Street
Lucindale Community Library located at
the Lucindale Area School, Gum Ave

Free Wi-Fi

Naracoorte Town Square
Naracoorte Library
Lucindale Community Library Gum Ave



Explore our towns

Naracoorte

The town of Naracoorte is the retail hub of the district, offering a range of accommodation, dining and shopping experiences. Naracoorte is renowned for its Scottish heritage and historic buildings. Smith, Ormerod and Robertson Streets bustle with a selection of unique boutiques, gift shops, and cafes, as well as servicing all grocery, health care and other everyday requirements.

Discover one of South Australia's top small museums: the **Sheep's Back Museum** in Naracoorte, housed in an 1870s flour mill, tells the stories of the Australian wool industry. See how the wool industry developed culminating with the unique 'Robotic Shearer'. Outside explore the wonderful collection of old buildings depicting the struggles of the early settlers. Sit in the old school room, drop into the post office, view a typical "dunny" and explore the farm machinery shed.

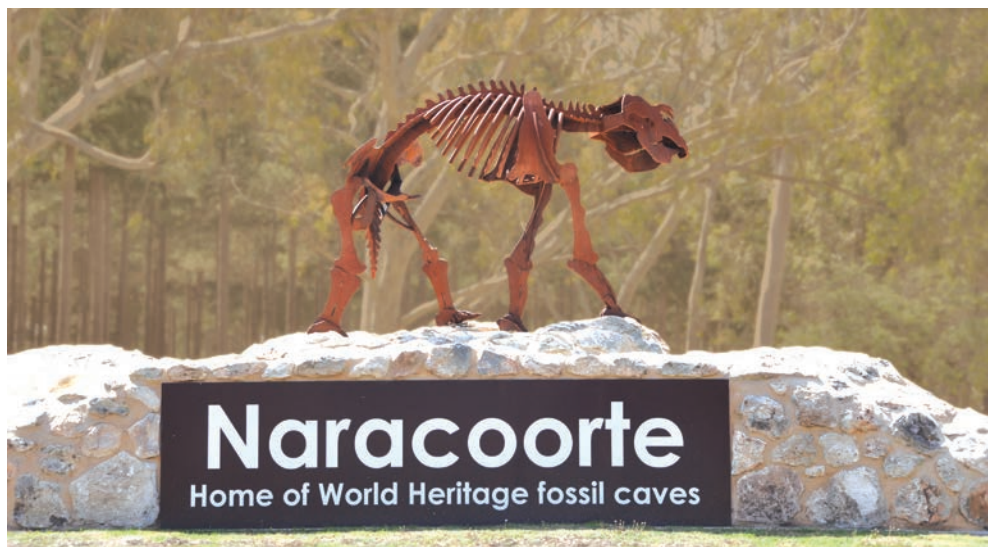
Rail enthusiasts can also relive the golden age of Limestone Coast locomotives by viewing a mammoth model train set in action depicting the Mount Gambier, Naracoorte and Kingston rail corridors.

The Sheep's Back Museum is integrated with the **Naracoorte Visitor Information Centre** which has a wonderful range of reasonably priced locally made goodies to take home or give as genuine Australian gifts and provides local intelligence on events, activities and attractions.

The **Naracoorte Art Gallery** is the oldest regional gallery in South Australia. Located in a beautiful Georgian building, the gallery is a showcase of traditional and contemporary visual arts. In addition to housing its permanent collection of Australian art, the gallery hosts exhibitions sourced from the National Gallery of Australia, as well as solo and group exhibitions from local and interstate artists. The Naracoorte National Trust furniture and social history collections are also on view.

Be surprised by the murals around Naracoorte – Diana Wiseman's Mega Fauna mural at the Naracoorte Art Gallery, a vibrant mural depicting the endangered Red Tail Black Cockatoos painted by contemporary artist Geoffrey Carran is located on Bank Place, other murals are located at the Naracoorte Swimming Lake, Naracoorte Creek Walk, Naracoorte Police Station and Bushman's Arms Hotel.

Testament to the important role of the wool industry, local business **Mini Jumbuk** has been manufacturing premium wool bedding products in Naracoorte and selling them to the world for more than 40 years. Browse a wide range of woollen quilts, mattress toppers and pillows including factory seconds at the Mini Jumbuk Factory Outlet Store. You'll also find many other items such as sheepskin footwear, mohair rugs, woollen hats, scarves, gloves and socks, Australian souvenirs and plenty more.



On the viewing gallery you can watch the care and detail that goes into making Australia's favourite wool bedding products.

Experience the Limestone Coast's food and wine at the **Taste the Limestone Coast Festival**, held annually over the first weekend in February. It also incorporates the **Naracoorte Cup** races, music, golf and other entertainment: an excellent weekend with something for all ages and interests.

At the **Naracoorte Swap Meet** in May, one of the largest swap meets in country South Australia, discover vintage machinery, old tools and collectables or set up a site to sell your own wares.

The **Naracoorte Regional Livestock Exchange**, on Wimmera Highway, is the premier livestock selling facility in the Limestone Coast. Cattle and sheep markets are held every Tuesday commencing at 9.00am. Additional sales are held on Fridays during peak periods (usually October to January).

Visitors are welcome to experience the unique excitement and sounds of sale day and meet some of the local farmers and stock agents.

The newly-redeveloped **Naracoorte Library + Town Hall** in the heart of the town centre precinct offers multipurpose spaces and modern IT facilities. Features include a dedicated children's area, linked gallery space and local history room.

World Heritage

A World Heritage site, like the Naracoorte Caves, is a place of cultural or physical significance to the planet, as determined by UNESCO.

Only exceptional places around the world are listed.

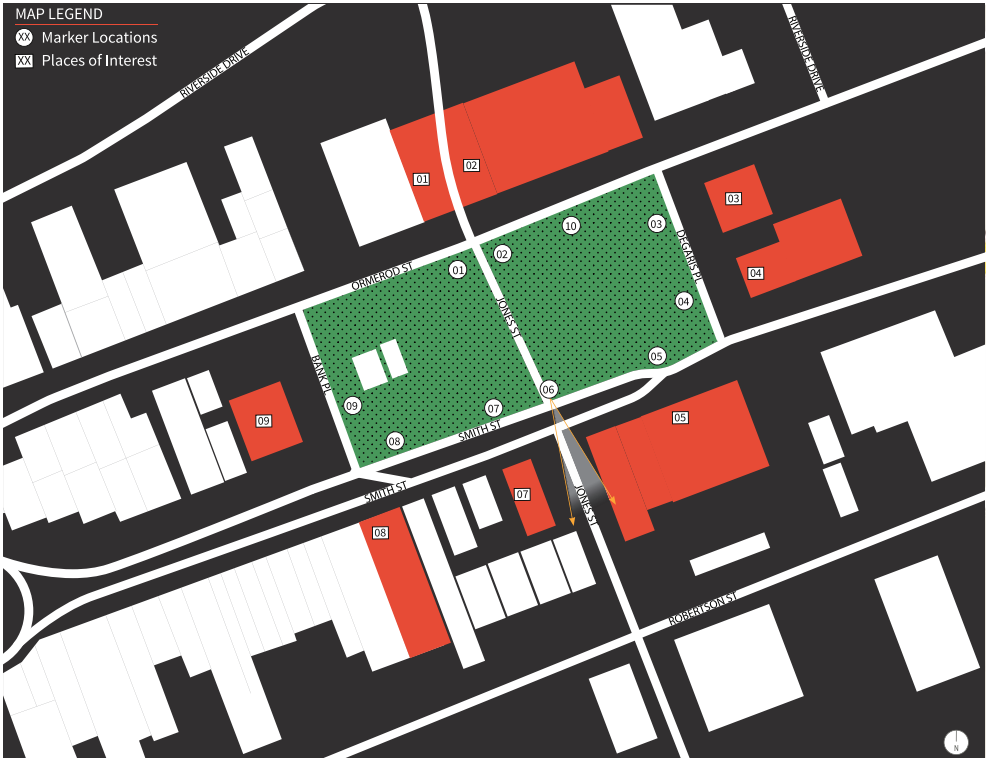


WORLD
HERITAGE

Naracoorte Historic Precinct

Today's Naracoorte, originally referred to as The Mosquito Plains Settlement, is a combination of two townships: a private town, Kincairg, built originally around the town squares, and the Government township of Narracoorte, built on the other side of the creek. They later combined to be known as Naracoorte.

This precinct, which includes today's Naracoorte Hotel, the building now occupied by the bottle shop and a supermarket, the town squares and the Council Offices, is the historic heart of today's town of Naracoorte.



- 01 Site of Caledonian Inn, the town's first building
- 02 The Naracoorte Hotel: originally the Merino Inn
- 03 Site of WT Gore's House
- 04 Naracoorte Lucindale Council Office (Windera)
- 05 The Kincairg Hotel: former site of 'Under-The-Verandahs'
- 06 Church Hill
- 07 Site of Aitcheson Grieve's Blacksmith Shop
- 08 Rivoli Picture Theatre: formerly the Austral Theatre
- 09 ANZ Bank: formerly the Union Bank
- 10 The Town Squares

In 1845 the first land claims in this part of the region were taken up by pastoralists.

The Occupation Licence on the land surrounding today's town was held by George Ormerod whose hut was on the creek further west.

By 1847 the first township building, an inn, was commenced on the 'Upper Adelaide Road', a dirt track that ran from the port of Portland, following the border northwards, then curving west near today's town to cross the creek at an angle suited to the bullock teams. The alignment of the old road can be gauged from the frontage of the present hotel building.

Naracoorte Lucindale's Traditional Owners

Naracoorte Lucindale has cultural links to and is the traditional home of Aboriginal people from numerous groups and who spoke a number of languages:

- Meintangk people on the western side, ranging from Kingston.
- Marditjali people on the eastern side, ranging from the Little Desert in Victoria.
- Potaruwutj people to the near north
- Ngarrindjeri from the Lower Murray/upper Coorong; and
- Bunganditj (Booandik) at Mount Gambier

Explore our towns

Lucindale

Lucindale is a small country town with a community that's big on hospitality – never more evident than in 2019, when Lucindale hosted triple j's One Night Stand.

Yakka Park is the focal point for events in Lucindale, hosting the **South East Field Days** in March and **Lucindale Working Dog Auction** in September.

During Easter, competitors and spectators from all over South Australia gather at the Lucindale Country Club to play on the Limestone Coast's only lawn courts at the Easter Tennis Tournament.

The annual **Lucindale Campdraft** is held in March, this uniquely Australian horse sport puts the skills of both horse and rider to the test.

The **Lucindale Historical Society Museum** features a collection of restored local buildings and a fascinating range of local history, Aboriginal artefacts, wartime memorabilia and pioneer machinery.

Centenary Park features a fenced playground, skate park, basketball half court, barbeque, rotunda with table and chairs, and public toilets and the Lucindale War Memorial.

Jubilee Park offers a mini lake and wetland with a bridge to explore the central island.





South East Field Days

Events

From food and wine, field days, swap meets, horse events, racing, tennis and golf tournaments - there's always something happening in Naracoorte and Lucindale. Check our calendar of events at www.naracoortelucindale.com



Lucindale Museum

Lucindale is great for independent travellers with camp sites at the Caravan Park or Lucindale Country Club. There are self contained accommodation options and an RV dump point.

The **Four Mile Picnic Area** is the gateway to Lucindale. Stop for a picnic amongst the gum trees and explore the tribute to Lucindale's early settlers.

The soldier settlers and families who played a key role in the development of the district are honoured and machinery used to develop the land is on display.

In the post World War II period, blocks were allocated to settlers in the Lucindale area through the Land Development Executive program for ex-servicemen.

EXPLORE OUR TOWN - LUCINDALE



Lucindale Hotel

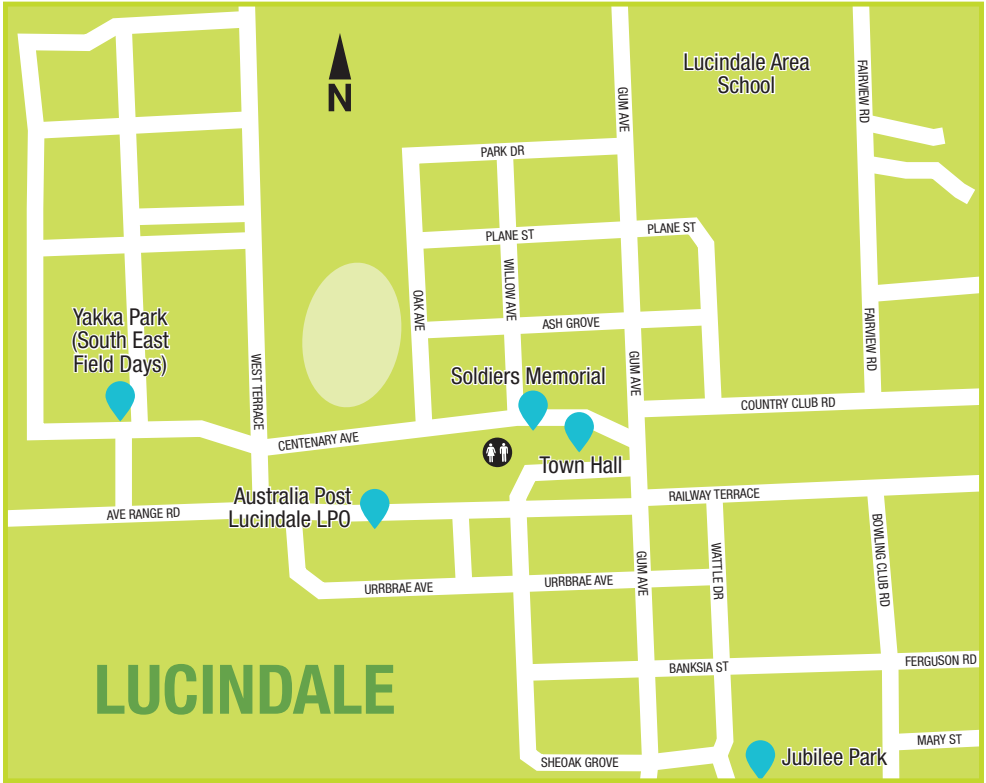


Lucindale Area School



Lucindale Yakka Park





Lucindale Playground



Back roads

Travel the back roads north east of Naracoorte and discover Hynam, Kybybolite and Frances. You will be rewarded with sights of magnificent red gums, rolling crops and pastures, and fine historic homesteads and woolsheds, giving a flavour of the district's heritage.

The hamlet of **Hynam**, located east of Naracoorte, was a large sheep run. Today you can discover the stories of Hynam's pioneer families at the heritage listed Hynam cemetery. The heritage listed Hynam Woolshed was the first stone shed in the district. Situated on private property the woolshed is not accessible but is easily viewed from the road.

Kybybolite, a town with a rich agricultural history, once housed an agricultural research facility that investigated pastures, sheep and dairying with far-reaching effects on those industries. The spacious Kybybolite Recreation Reserve is the sporting and community hub. The gates to the Reserve were erected in memory of those who served in World Wars I and II.

The old Woolshed, Hynam.

Discover **Frances** on the border of South Australia and Victoria. Self sufficient travellers are welcome to set up at the community run Frances Recreation Reserve. The spacious Frances Recreation Reserve is the sporting and community hub. Features include: oval, tennis courts, netball courts, clubrooms, bowls club and War Memorial. There is access to toilet facilities and some amenities. If you are staying at this site we encourage you to help keep it clean, and take the time to discover and support the local businesses.

While in Frances, enjoy a break in the Frances Town Square - a newly-developed shared recreational space in the centre of town for locals and visitors alike. The Town Square features a nature play area, giant water hand pump, gazebo with seating and a table, large lawned area, gardens and five impressive sculptures acknowledging the area's connection with the Red-Tailed Black Cockatoos.





Mustering sheep near Kybybolite



Frances Town Square



Kybybolite Sports Complex



Polocrosse at Hynam

Natural Experiences, Wetlands & Wildlife

Naracoorte Lucindale has plenty of areas to encounter and experience nature and wildlife at its best.

Walk on water amongst brolgas

Bool Lagoon, a seasonal wetland, is one of the largest and most diverse freshwater lagoon systems in southern Australia and is home to a wide range of wildlife, providing drought refuge for rare and endangered birds. Hacks Lagoon, adjoining the main basin of Bool Lagoon, is another wetland habitat to explore.

Hundreds upon hundreds of waterbirds flock to the freshwater wetland system including ibis, magpie geese, black swans and brolgas - the most spectacular of the 150 species of birds that visit the Lagoons.

Bool Lagoon, one of the most valuable wetland conservation areas in Australia, is recognised under the Ramsar Convention on Wetlands as a Wetland of International Importance. It is protected under the Japan/Australia and China/Australia Migratory Bird Agreements because of the importance of the area as a summer refuge for migratory waders.

Walk

Bushwalking is a fantastic way to connect with nature and experience the wetlands and lagoons.

The Tea Tree Boardwalk takes you into the heart of the lagoon and gives the feeling of walking on water. See the nest areas of ibis, spoonbills and many other birds in the gnarled and weathered tea-trees. Learn who lives where in the wetland. Make yourself comfortable in a 'bird hide' and listen for the creatures of the wetlands - birds, insects and frogs.



There are easy walks and moderate hikes where you can view a range of wetland areas including freshwater marsh, reeds, rushes and open water, providing nesting and feeding areas for birds, reptiles, frogs, elusive water-rats and many aquatic insects.

Spring is usually the best time to experience the wetland and its prolific birdlife.

The number of birds at the lagoons is dependent on climatic conditions and during summer months the lagoon may dry up. Be sure to bring your binoculars, you never know how many birds will be seeking refuge at the lagoon.

Camping is available at the Bool Lagoon campground. Entry and camping fees apply. For more information visit National Parks South Australia - www.parks.sa.gov.au

Drive

Take the short drive to the top of Big Hill to see how big these wetlands really are. Brolgas are often seen feeding in The Black Rush Swamp just west of Big Hill.

Take the extended drive via Bool Lagoon and Moyhall Roads to Little Bool Lagoon where the deep, open water is popular with waterbirds and the nearby Lily Ponds is an important nesting site for ibis.

Cockatoo Lake

Enjoy the beautiful tranquil water front views of **Cockatoo Lake** on a day trip or stay for a few nights. Favourite activities are canoeing, yabbing, water skiing, walking and fishing. There are flat green areas to park the van or pitch a tent. A short drive north of **Naracoorte** (30kms), Cockatoo Lake, is a great spot if you prefer to be out of town. The lake is seasonal and water level is dependent on rainfall.

Mullinger Swamp

Lying astride the Victorian border near **Kybybolite** is **Mullinger Swamp**, with huge, ancient gums, plentiful birdlife and waters to canoe or paddle (subject to seasonal conditions). Adjacent to the swamp is the Limestone Coast's largest living red gum, standing about 50 metres high with a circumference of 11.6 metres. The tree is believed to be between 800 and 1,000 years old and much of the base is hollow – in past times used as a change room for swimmers!



NATURAL EXPERIENCES, WETLANDS & WILDLIFE

Conservation Parks

Mary Seymour Conservation Park, just a few kilometres west of Bool Lagoon, features abundant natural bushland, with numerous bird species. Seasonal orchids are among the variety of plants that can be spotted during spring.

Big Heath Conservation Park, 29 kilometres south west of Naracoorte, also offers ample opportunities for the keen bird watcher and bush walker to experience nature at its best.

Fairview Conservation Park, just north of Lucindale, is famous for its abundant displays of native flowers and secluded picnic spots over its 1,400 hectares.

There are no facilities at these parks and bushwalking in these parks is only recommended for experienced and self-sufficient bushwalkers.

The Bird Room

Featuring several hundred exhibits of taxidermic birds and other specimens. The museum is approximately 35 kilometres south west of Naracoorte, just on from Bool Lagoon. Tours are by appointment only by phoning 0400 252 085.



Struan House

This spectacular double storey mansion, featuring 40 main rooms, was once home to the pioneering Robertson family.

Situated 15 kilometres south of Naracoorte, just off the Riddoch Highway, Struan House is now home to the Department of Primary Industries & Regions SA. The home was completed in 1875 and had a \$2 million upgrade in 2008.

Struan House is no longer open to the public, but is clearly visible from the Riddoch Highway.

Kangaroos and wildlife

The Naracoorte Caves – a great spot to get close to the magnificent local kangaroos and experience nature at its best.



Struan House



World Heritage Naracoorte Caves

- One of the world's best fossil sites

The World Heritage Naracoorte Caves is one of the world's best fossil sites, a place where marsupial lions, enormous kangaroos and giant monitor lizards met their deaths and were preserved by layers of ancient sand. At the Caves, discover the unique Australian history of the region's fauna and flora.

Since 1969 when cave explorers entered a vast underground chamber and discovered skulls and jaws of Australia's lost giants, the megafauna, the Caves have attracted global scientific attention. Today, new scientific discoveries are being unearthed and the Caves continue to reveal stories about our natural history as far back as 500,000 years.

Layered fossil deposits reveal megafauna species including heavyweight plant eaters such as *Zygomaturus trilobus*, short-faced leaf-eating kangaroos such as *Procoptodon goliah*, and the five-metre snake *Wonambi naracoortensis*. The most famous of these is the marsupial lion *Thylacoleo carnifex*. As well as world significant fossil deposits the Naracoorte Caves also contain spectacular calcite formations, such as stalagmites.

A World Heritage site is a place of cultural or physical significance to the planet, as determined by the United Nations Educational, Scientific and Cultural Organisation (UNESCO). Only exceptional places around the world are listed.

The Naracoorte Caves is a destination for all seasons and can be explored on self-guided, guided and adventure caving tours. The Victoria Fossil Cave

showcases the World Heritage values of the Naracoorte Caves. The Fossil Chamber in this cave is the most extensively studied and provides a unique look back into the climate and environment when megafauna roamed the area. Your guide will tell you about the accumulation of bones in the caves, excavation techniques, current research and World Heritage.

Alexandra Cave is full of speleothems – stalactites, stalagmites, and columns. Grand and inspiring, Stick-Tomato Cave (public access section only) is the only cave you can visit without a guide – discover at your leisure. Too difficult to choose – then the World Heritage Tour is for you.

This is a unique opportunity to visit the working fossil digs and Fossil Lab.

The Naracoorte Caves is one of only two known breeding places for the critically endangered southern bent-wing bat.

On the Bat Centre and Blanche Cave Tour, watch and learn about the fascinating activities of the southern bent-wing bats. In the Bat Observation Centre, via infrared camera, see the bats move about their maternity chamber. The tour then heads into the majestic Blanche Cave where in winter, you may see bats hibernating in a huddle on the cave roof. In summer at dusk, from above ground, watch the bats' spectacular flight from the Bat Cave as they head out for a feed of insects. If you're an early riser, you can also see them return at dawn.

Other above ground activities include a visit to the Wonambi Fossil Centre - step back to a time when megafauna roamed the landscape. Enjoy one of four main walking trails in the Naracoorte Caves National Park where you can explore the above-ground world for free and learn more about the World Heritage features of the park.

The Roof Top Loop Walk provides universal access for all ages and abilities with viewing platforms providing a glimpse into the cave interior. At the start of the walk explore the Fossil Hunters Nature Playground. Along the Roof Top Loop Walk and World Heritage and Stoney Point Hikes take in the above-ground world, while keeping an eye out for native animals and birds.

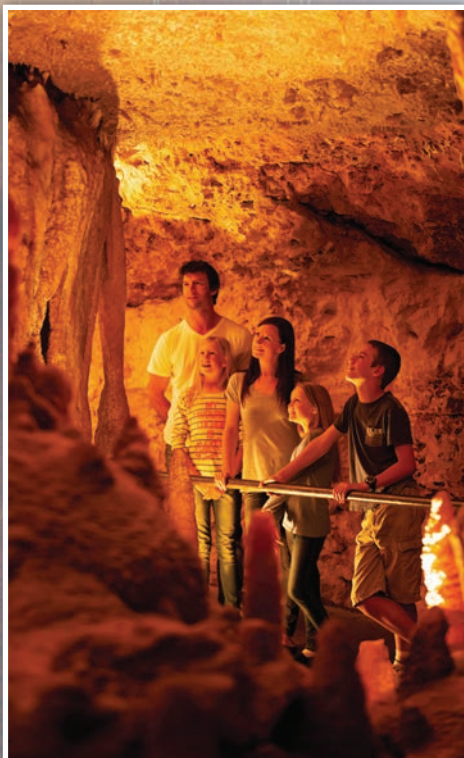
After exploring, enjoy a picnic lunch in the beautiful grounds (barbecue facilities are available) or relax in the Caves Cafe. The Naracoorte Caves camping area is suitable for tents, camper trailers, caravans, motor homes and camper vans. Wirreanda Bunkhouse has dormitory-style accommodation.

Plan your visit to the Naracoorte Caves www.naracoortecaves.sa.gov.au

The information on the Naracoorte Caves is available in The Conversation article <https://theconversation.com/naracoorte-where-half-a-million-years-of-biodiversity-and-climate-history-are-trapped-in-caves-78603>

FOSSIL HUNTERS

In 1857, guided by the flickering light of a candle deep in a cave at Naracoorte, Reverend Julian Tenison-Woods stumbled across thousands of tiny bones of rodents and small marsupials buried at the base of crystal columns. Without knowing it, Woods had found a time machine of sorts - a record of biodiversity and environment spanning more than half a million years. Fast forward to 1969, the largest, most diverse and best preserved Pleistocene vertebrate fossil assemblage in Australia was discovered by Professor Rod Wells and Grant Gartrell, in what is now known as the Fossil Chamber. Because of the extraordinary richness and potential of these fossil deposits, the Naracoorte Caves were declared a World Heritage site in 1994.





Uncover the secrets that lie beneath

at South Australia's only World Heritage Site



**Naracoorte
Caves**

Caves Café
OPEN DAILY
serving the best
local produce &
great coffee!

Explore our
recently
opened nature
playground

Accommodation
On site camping
Powered sites
Wirreanda
Bunkhouse
dormitory

Tour times*

Alexandra Cave tour
9.30 am and 1.30 pm

Victoria Fossil Cave tour
10.15 am and 2.15 pm

Blanche/Bat tour
11.30 am and 3.30 pm

**Wonambi Fossil Centre Stick
Tomato Cave**
(self-guided tour, ticket required)

**Additional tours during school holidays,
check website or contact site for details*



Naracoorte Caves
National Park

89 Wonambi Rd,
Naracoorte 5271

Open 7 days
T: (08) 8760 1210

naracoortecaves.sa.gov.au



United Nations
Educational, Scientific and
Cultural Organization



Australian Fossil Mammal Sites
(Riversleigh / Naracoorte)
inscribed on the World Heritage List in 1994



Government
of South Australia



Gallery, Public Art & Heritage

Discover one of South Australia's regional museums: the Sheep's Back Museum. It tells the stories of the Australian wool industry, its people and their importance. Feel part of the picture as you step back in time and explore this dynamic drama.

Incorporated into the Sheep's Back Museum is an impressive model railway display to delight rail enthusiasts of all ages depicting the Mount Gambier, Naracoorte and Kingston rail corridors.

The Museum also houses the accredited Naracoorte Visitor Information Centre. Call into the Naracoorte VIC for local intelligence on events, activities, attractions, and some great holiday ideas.

Naracoorte Art Gallery is the oldest regional gallery in South Australia. Located in a beautiful Georgian building in Ormerod Street, the gallery is a showcase of traditional and contemporary visual arts.

In addition to housing its permanent collection of Australian art, the gallery hosts exhibitions from local and interstate artists.

The new Wonambi Gallery at the redeveloped Naracoorte Library + Town Hall features a changing program of exhibitions, ranging from local artists and collections to nationally-significant touring works. Located in the foyer of the Town Hall, it is accessible whenever the facilities are open.

Lucindale is home to the Lucindale Historical Society Museum, featuring a collection of restored local buildings and an intriguing array of district memorabilia.

Collated by the descendants of the community's pioneering families, the Historical Museum encapsulates a fascinating range of local history, Aboriginal artefacts, wartime memorabilia and pioneer machinery.

GALLERY, PUBLIC ART & HERITAGE



 <https://www.facebook.com/naracoorteartgallery/>

The oldest community run regional art gallery in South Australia.

Featuring a varying exhibition program and a unique significant permanent collection of art. A gift shop with items created by local artists.

OPEN

10am to 4pm Wed - Fri

10am to 3pm on Weekends

91 Ormerod Street, Naracoorte SA, 5271

P: 08 8762 3390

M: 0478 609 868

E: naracoortegallery@gmail.com

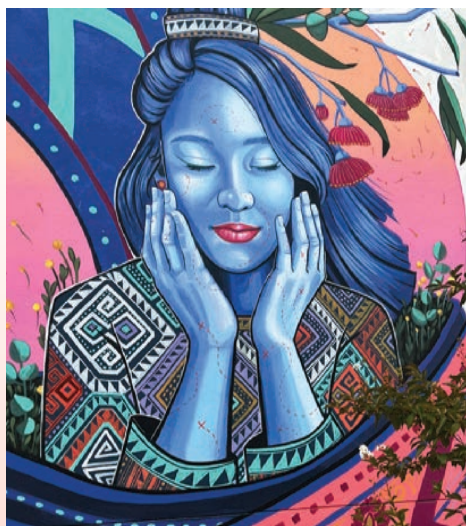


Public Art

Park your car, grab a coffee, and meander around Naracoorte exploring the unique artworks in the township, then cycle or drive to take in more a little further afield, including at the World Heritage Naracoorte Caves, Lucindale and Frances. Immerse yourself in the many cultures that call our area home, visit the Naracoorte Swimming Lake mural or snap a selfie with the curious pink sheep at the Sound Shell in the Naracoorte Town Square.

Embrace the international significance of the Naracoorte Caves and take a selfie with the vibrant, stylised Caves mural on Ormerod Street or with the stunning megafauna sculpture located at the entrance to the Caves.

Pick up a Naracoorte Art Trails pocket map from the Naracoorte Visitor Information Centre and enjoy your own scenic art tour, learning more about each artwork on your journey.



Events Calendar

Naracoorte Lucindale offers a diverse calendar of events – food and wine, agriculture, sport and recreation and art and culture. For the latest information on all events, head to: www.naracoortelucindale.com

January

Australia Day breakfast

Naracoorte, Town Square

www.naracoortelucindale.sa.gov.au

Australia Day lunch

Lucindale, Centenary Park

www.naracoortelucindale.sa.gov.au

February

Taste the Limestone Coast Festival

Naracoorte

www.thetastefestival.com.au

Naracoorte Cup

Naracoorte Racing Club

www.theracessa.com.au

Lucindale Show

Lucindale Oval

www.sacountryshow.com

Naracoorte Kings Junior Basketball Carnival

www.facebook.com/naracoortedistrictbasketball

March

Harmony Week celebrations

www.facebook.com/naracoortelucindalecouncil

South East Field Days

Yakka Park, Lucindale

www.sefd.com.au

Lucindale Campdraft

Yakka Park

[www.facebook.com/Lucindale-](http://www.facebook.com/Lucindale-Campdraft-Assoc-681707038628789/)

[Campdraft-Assoc-681707038628789/](http://www.facebook.com/Lucindale-Campdraft-Assoc-681707038628789/)

April

Easter Tennis Tournament

Lucindale Country Club

www.lucindalecountryclub.com.au





May

Naracoorte Swap Meet
Naracoorte Showgrounds
www.swapmeets.wordpress.com

Naracoorte Horse Trials
Naracoorte Showgrounds, Naracoorte
www.naracoortehorsetrials.com

June to September

Perfect for exploring all the district has to offer! Caves, wetlands, wine, food, museums, parks and more...

October

Naracoorte Show
Naracoorte Showgrounds
www.sacountryshows.com

November

Taskforce 72 Model Ship Regatta
Naracoorte Swimming Lake
www.taskforce72.org

Wrattonbully Race Day
Naracoorte Racing Club
www.theracessa.com.au

December

Naracoorte Christmas celebrations,
including Christmas Parade
Naracoorte Town Centre

Lucindale Community Christmas Party
Lucindale Town Centre



Events & Activities





Aussie Rules Football



Fringe Festival Fun

Harmony Day



THE SHEEP'S BACK MUSEUM

Arriving to graze sheep at the district over 175 years ago, the first Europeans discovered harsh, unrelenting bushland.

Discover the trials they faced, and the innovations that helped them overcome, as they rode 'the sheep's back'.

The SHEEP'S BACK Museum

Showing the lives of the people and their industry.

Acclaimed by our visitors -

"One of the best exhibits I've seen."

"We all had a great time."

"Kids really enjoyed it!"

"Outstanding professional exhibition."

Understand the beginning, walk through the woolshed, see the life of the first settlers,

explore the robotic shearer, discover early machinery and transport, experience the one teacher school and more!



Visit us at corner MacDonnell & Cameron Streets, Naracoorte

Phone 08 8762 1399 • Email: naracoortevic@nlc.sa.gov.au

Visit: www.thesheepsbackmuseum.org.au

Group Catering and Guides available by appointment

Outdoor Fun & Recreation

Naracoorte Lucindale is known for its well-maintained open green spaces. Enjoy the clean and scenic parks, gardens, playgrounds or ovals for a relaxing picnic, a play with the kids, a kick and a catch, or just relax and read a book in the peaceful surroundings.

Recreation facilities are many and varied, including golf, tennis, football, netball, hockey, basketball, soccer, lawn bowls, squash, water skiing, horse riding... the list is virtually endless.

Swim in Natural Beauty – Naracoorte Swimming Lake

Set in glorious grounds the Naracoorte Swimming Lake is a swimming pool with a difference! The huge man made lake with concrete floor and walls and chlorinated water ranges from 1m to 2m deep in the middle of the pool. There are shallow sections for the littlies, deeper sections for lane swimming, a diving pontoon and an enclosed children's area.

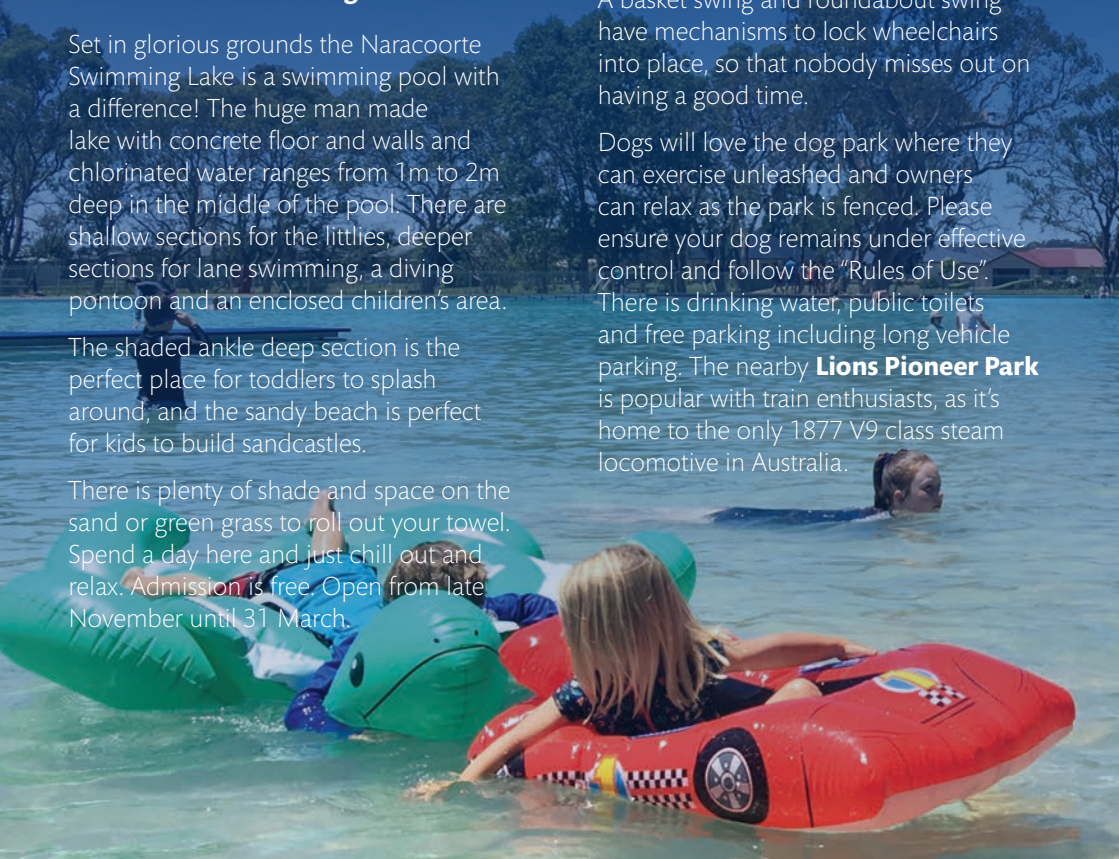
The shaded ankle deep section is the perfect place for toddlers to splash around, and the sandy beach is perfect for kids to build sandcastles.

There is plenty of shade and space on the sand or green grass to roll out your towel. Spend a day here and just chill out and relax. Admission is free. Open from late November until 31 March.

Every Saturday at 8.00am the Naracoorte Swimming Lake is the starting point for the **Naracoorte Lake parkrun** – a 5km run – it's you against the clock. Find out more at www.parkrun.com.au/naracoortelake/

Naracoorte's **Market Square Recreation Area** has something for everyone – an enclosed playground, Skate Park, 1/2 basketball court, dog park, picnic areas and toilets. The picnic area inside the playground is suitable for all weather with a gazebo covering the tables. The modern playground includes swings, flying fox, monkey bars and a seesaw. A basket swing and roundabout swing have mechanisms to lock wheelchairs into place, so that nobody misses out on having a good time.

Dogs will love the dog park where they can exercise unleashed and owners can relax as the park is fenced. Please ensure your dog remains under effective control and follow the "Rules of Use". There is drinking water, public toilets and free parking including long vehicle parking. The nearby **Lions Pioneer Park** is popular with train enthusiasts, as it's home to the only 1877 V9 class steam locomotive in Australia.



There's something for all ages at the **Memorial Parklands** in Naracoorte. Get fit on the adult exercise equipment, stroll or jog the 1.1 kilometre walking track or relax on the wide, open green space. Local children love the nature play area - climbing, playing in the sandpit and enjoying the waterplay are popular. Enjoy a picnic or relax under the shaded gazebo, where there are tables and seats. Dogs are welcome to exercise off their leash and there's even a dog drinking fountain to quench their thirst after a run around. Please ensure your dog remains under effective control. **Gares Swamp**, adjacent to Memorial Parklands, is 2 hectares of native flora and fauna, wetlands and natural vegetation.

The **Naracoorte Town Square**, in the centre of Naracoorte, is a popular gathering spot and is an ideal spot to enjoy lunch. The Town Square is home to the Naracoorte War Memorial, where you can reflect on the sacrifice of people who have served Australia or complete a lap of the paved Walk of Honour, listing all people from the Naracoorte district who served in the First World War (WWI) and in the Light Horse Regiment, the Second World War (WWII), Vietnam War and Korean War. There are tables and chairs available for picnics and the green lawn and shade is great for stretching your legs or relaxing. There are also public toilets.



Naracoorte Creek Walk - Ingrid Lees

The **Naracoorte Creek Walk** follows the Naracoorte Creek through the Township of Naracoorte. It's popular with locals for a quiet stroll or to keep fit. It's pedestrian, bicycle and gopher friendly. Approximately 5kms in length it can be completed as a loop or in sections. The Creek Walk encompasses the Naracoorte Nature Park where wildlife can be spotted. The walk passes the **Naracoorte Cemetery** where you can explore the monuments and gravestones that are an important part of Naracoorte's heritage.

During the swimming season, cool off at the Naracoorte Swimming Lake. Along the way there are tables and seats to rest, have a picnic or just take in the views and beautiful scenery. Picnic areas are located near Riverside Drive and Wheeler Court.



Lions Pioneer Park



Naracoorte Regional Livestock Exchange

OUTDOOR FUN AND RECREATION

Take a walk around Naracoorte and discover the stories since its settlement along the **Naracoorte Heritage Trail**. The heritage markers highlight points of historical significance around Naracoorte telling the stories behind how and why Naracoorte was established in its location, and how it's evolved since its establishment. Maps of the Naracoorte Creek Walk and Heritage Trail (see page 14) are available from the Visitor Information Centre or visit www.naracoortelucindale.com

Both the **Naracoorte Golf Course** and **Lucindale Country Club** have stunning 18-hole golf courses, greens are grassed and fully watered in natural parkland settings on slightly undulating country. The Naracoorte Golf Club is included in Golf Australia's Top 100 public access golf courses.

The Lucindale Country Club also has 12 magnificent lawn tennis courts – the Limestone Coast's only lawn courts. Frances, Lucindale and Naracoorte all have active Bowling Clubs, offering lawn and indoor bowls with various weekly competitions. Visitors are always welcome.

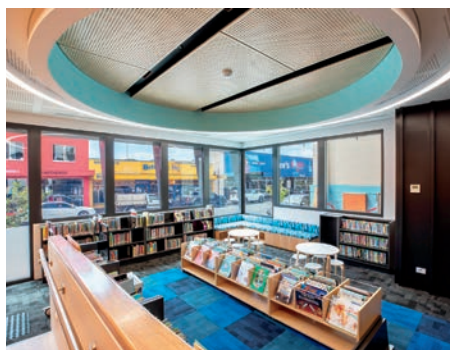
The **Naracoorte Caves Trail** connects the town of Naracoorte with the world-renowned Caves and allows visitors to travel across the landscape and understand how it has changed over time. Along the 14.7km long Naracoorte Caves Trail are a series of information panels that guide bike riders and walkers through the story of Naracoorte's past and present while traversing through diverse scenery of farmland, vineyards and native vegetation.

Horses are a big part of country life. Enjoy the races with a group of friends at the **Naracoorte Racing Club**. From the glamour of the Naracoorte Cup or a more relaxed atmosphere at one of the regular meets. There's nothing like a day at The Races. The **Lucindale Campdraft** and **Naracoorte Horse Trials** are popular annual events, you can also see horses in action at the Naracoorte and Lucindale Shows.

Visit a sporting ground in Frances, Kybybolite, Lucindale or Naracoorte on Saturday during Winter and experience the excitement of a local footy or netball game. Sit back in Summer and enjoy cricket or tennis.



Naracoorte Library + Town Hall



The redeveloped Naracoorte Library + Town Hall opened at 93-95 Smith Street in February 2022, delivering a flexible and vibrant space to meet the needs of a growing and diverse community.

The Library boasts a playful and engaging children's area, local history room and community meeting room, and is connected to the historic Town Hall by a linked gallery space which presents a changing program of exhibitions.

The Town Hall is a popular venue for a wide range of events with spaces available for hire including an impressive auditorium, supper room and upstairs meeting room.

**Opening hours for the Library are 9am-5.30pm on Monday, Tuesday, Wednesday and Friday, 9am-8pm Thursday and 8.30am-noon Saturday.*

93-95 Smith Street, Naracoorte | 08 8762 2338

Wrattonbully Wine Region

The Wrattonbully Wine Region has a rich story, interweaving viticulture, agriculture, geology and history. Limestone is the critical component of the Wrattonbully landscape that has resulted in both the labyrinth of caves and the establishment of vineyards.

The ancient limestone bedrock is the common link between the caves and the vineyards. The ancient limestone and terra rossa soil was the impetus to establish vineyards, dig a bit deeper and hidden beneath the premium vineyards is the underlying network of the World Heritage Naracoorte Caves, a unique treasure trove of history.

The moderate climatic characteristics of the region are ideal for quality wine production, allowing cool slow ripening periods, on soils of good water holding capacity, with availability of valuable, high quality underground water. This, coupled with a focus on sustainability, has resulted in vineyards that produce top quality wines acknowledged by reviews, strong results in wine shows and very impressive winemaker and consumer sentiments.



There is a strong sense of community between the farmers / vineyard owners and scientists – palaeontologists – forming tight working relationships as caves are discovered on vineyard land, and conserved and managed cooperatively. This reinforces the Wrattonbully approach to land management, prioritisation of sustainability rather than exploitation, and responsible custodianship.

The main wine grape varieties grown in Wrattonbully are the classic Australian varieties of Cabernet Sauvignon and Shiraz, with Merlot and Chardonnay plantings the next two most widely planted. The whites include Pinot Gris, Sauvignon blanc, Riesling, Semillon and Viognier.

Wrattonbully Wine can be purchased locally at hotels, restaurants and independent bottle shops. Discover more about the Wrattonbully Wine Region at www.wrattonbullywineregion.com

Grapes and Caves

There are 2,680 hectares of premium vineyards in the Wrattonbully Wine Region and 150 known caves, some of them found in the 1990s as the vineyards were being established.



WRATTONBULLY WINE REGION



World Class Wine at its very best!

Discover and experience the fine wines of the Wrattenbully Wine Region.

Available at local cellar doors, restaurants, hotels and bottle shops.

E info@wrattenbullywineregion.com

W www.wrattenbullywineregion.com



MALONE WINES



MALONE



The Malone Vineyard from which our premium Cabernet and Shiraz wines are crafted is located in the Wrattenbully Wine Region south east of Naracoorte.

Our award winning wines are readily available locally or browse our online store.

P 0408 852 706 • Tastings by appointment

E info@malonewines.com.au

W www.malonewines.com.au



CUVÉE-CO



PETA BAVERSTOCK is the award winning winemaker and creative behind the premium brand Cuvée-Co Wines, and is all about championing sparkling wine. Only bubbles are made, with incredible fruit bringing incredible fizz. The cuvées in the range have fruit sourced from the Limestone Coast of South Australia.

The wine labels have unique artwork by Adelaide based Artist Dan Tomkins and Peta's sons.

Peta has been a finalist numerous times in the Vin de Champagne Award, named in the top 50 Young Gun of Wine Awards and winner of Best Young Wine in Show at the 2021 Australian Sparkling Wine Show.

For more information - cuveecowines.com

EIGHT AT THE GATE



eight at the gate WINES

A story beginning with two sisters

Sisters Jane and Claire own and operate their vineyard in the Wrattenbully Wine Region. Eight at the Gate is a family owned and operated wine business which produces premium cool climate wines with a strong expression of terroir.

Named after their 8 children who can usually be seen hanging off a gate or a fence somewhere.

The sisters' philosophy around growing grapes and making wine is much the same as raising their children: provide a sustainable, healthy, nurturing environment and don't interfere too much!

Eight at the Gate Wines - made with passion, resolve and a touch of chaos!

Cellar Door

Open 6 days a week for tastings from 10.30-2.30pm.
Closed Thursdays. Enjoy a wine with your lunch or dinner booking at the Chardonnay Lodge.

Cellar Door at Chardonnay Lodge

A 15006 Riddoch Highway,
Coonawarra SA 5263

Cellar Door Enquiries

P 0416 494 868

Join the Chaos Club

For exclusive member deals



eightatthegate.com.au

WILD GAME WINE

Biologically Grown, Award Winning Wines | Tastings & Sales by the Glass or Bottle | SA Produce Platters



WILD GAME
WINE

Cellar Door and Wine Bar
Open Friday 12-8pm Sunday 12-6pm

Adjacent Naracoorte Regional Art Gallery
91 Ormerod Street, Naracoorte

0419 261 075 • wildgamewine.com.au

NICK MCBRIDE MP

MEMBER FOR MACKILLOP

*Welcoming all visitors to
Naracoorte Lucindale
& district*

146 Smith Street, Naracoorte SA 5271

P: (08) 8762 1211

E: Mackillop@parliament.sa.gov.au

W: www.nickmcbride.com.au



@NickMcBrideMacKillop



Eat, Drink & Stay

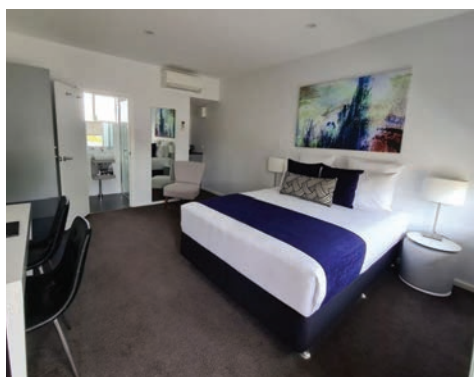
The Naracoorte Lucindale district is a hotbed of wine and food production, with some of Australia's finest wines, meat and other produce originating in this region.

Locally grown and produced meat, food and wine can be purchased from locally grown and produced meat, food and wine is widely available throughout the area and dining options are many and varied, from multicultural offerings as diverse as Indian, Thai and Chinese, to traditional Aussie fare at local hotels, cafes and restaurants.

Whether you're wanting to enjoy a relaxed casual atmosphere or a more sophisticated dining option, there's something for all tastes and budgets.

Popular 7-day food options in Naracoorte are McDonald's and outlets at OTR.

Accommodation offerings around the Naracoorte Lucindale district are varied, ranging from quaint bed and breakfast style, to caravan parks, camping, motels and hotels. Contact the Visitor Information Centre to explore accommodation options.



PEARL CONTINENTAL INDIAN CUISINE & CAFE



PEARL CONTINENTAL
AUSTRALIA

RESTAURANT & CAFE



Haidari

Indian Cuisine & Sensational Pizzas
Barista made coffee & delicious cakes

Dine in or take away. Fully licensed

Dinner Tuesday - Sunday

Lunch Tuesday - Sunday

Cafe Open from 8am

(Check Facebook page for times)

150 - 156 Smith Street, Naracoorte SA

Reservations 0434 136 183 Email pcnaracoorte@gmail.com



DRAGON VILLAGE CHINESE RESTAURANT



DINE IN OR TAKE-AWAY

FULLY LICENSED

TRADING HOURS:

	LUNCH	DINNER
Monday	CLOSED	CLOSED
Tuesday	CLOSED	5.30 - 8.00pm
Wednesday	12.00 - 2.00pm	5.00 - 8.00pm
Thursday	12.00 - 2.00pm	5.00 - 8.00pm
Friday	12.00 - 2.00pm	5.00 - 9.00pm
Saturday	CLOSED	5.00 - 9.00pm
Sunday	CLOSED	5.00 - 8.00pm
Public Holidays	CLOSED	5.30 - 8.00pm

8 MacDonnell Street, Naracoorte SA 5271

Phone: (08) 8762 1919



MORRIS BAKERY & CAFÉ



Baked Fresh Every Day

Award Winning Pies & Pasties

Sandwiches, Rolls, Bread, Cakes & Pastries, Hot & Cold Drinks.

Dine in or Takeaway.

Monday - Friday: 5.00am - 4.00pm

Saturday: 7.00am - 1.00pm

120 - 122 Smith Street, Naracoorte SA

P. 08 8762 1129 F. 08 8762 0590



MADDIES CAFÉ



Maddies Cafe is perfectly located in the centre of town. Offering a wide range of delicious foods including all day breakfast, light lunches, daily specials plus coffee and sweet treats.

Open Monday - Friday 8am - 4pm

Closed Saturday, Sunday & Public Holidays

Goodchild Place, Naracoorte SA

P 08 8762 3953



LUCINDALE CAFE & DELI

LUCINDALE Café & Deli

DINE IN OR TAKE AWAY

Service with a smile!

- Bread & Milk
- Pies & Pasties
- Sweets
- Ice Creams
- Bags of Ice
- Counter Rolls
- Groceries
- Newspapers
- Various Fried Foods
- Amanti Coffee
- Cold Drinks & Milkshakes

PHONE: 8766 2221

EMAIL: k.m.kendrick19@outlook.com

Monday-Friday 7.00am • Saturday 8.00am



LUCINDALE HOTEL

LUCINDALE HOTEL



Family Owned, Delicious Food,
Local Wines, Cold Beer
& Kid Friendly

Monday: Closed

Tuesday: Closed

Wednesday: 4pm - 11pm

Thursday: 4pm - 11pm

Friday: 4pm - 12am

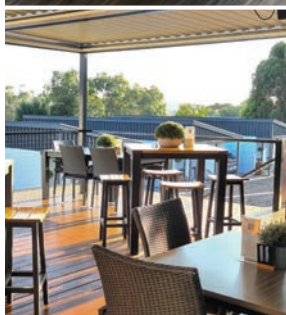
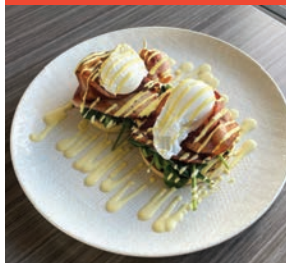
Saturday: 4pm - 12am

Sunday: 12pm - 5pm

Ph: 08 8766 2465



THE AVENUE INN CAFE & RESTAURANT



THE AVENUE INN

The cafe and restaurant features locally sourced produce and an excellent range of wines and beverages. Avenue Inn promotes modern Australian cuisine and recently won the Australian Good Food Guide Reader's Choice Award for 2023.

WEEKEND DESTINATION CAFE

8:30am - 2:00pm

BREAKFAST

Wed - Fri: 7:00am - 10:00am

DINNER Wed - Sat: 5:30pm - 8:00pm



17 Fourth Avenue, Naracoorte | Phone 08 8743 4374

www.theavenueinn.net | bookings@theavenueinn.net



BARISTA MADE, McCafé® COFFEE

AVAILABLE IN DRIVE-THRU

MCDONALD'S® MOUNT GAMBIER, MOUNT GAMBIER EAST,
NARACOORTE & PORTLAND OPEN 7 DAYS



TENDER CUTS



Limestone Coast's most award-winning butcher

- Stocking locally grown Watson's Lamb & 36° South Beef
- Wide range of nationally recognised award winning sausages
- Fresh fish weekly
- Range of Watson's Smallgoods made & smoked in store
- BBQ, pan & oven meal solutions
- Private farm contract processing of livestock

27 Ormerod Street Naracoorte (next to Post Office)

P: 08 8762 1267



**WATSON'S
LAMB**

Traditional & Modern Recipes

Watson's

SMALL GOODS
NATURALLY SMOKED

THE BAKEHOUSE



Award winning Pies, Pasties & Sausage Rolls,
fresh Bread, Cakes, Sweet Treats and Coffee.

Baked in-house fresh daily

Open Monday to Friday - 8am to 4pm

Saturday - 8am to 1pm

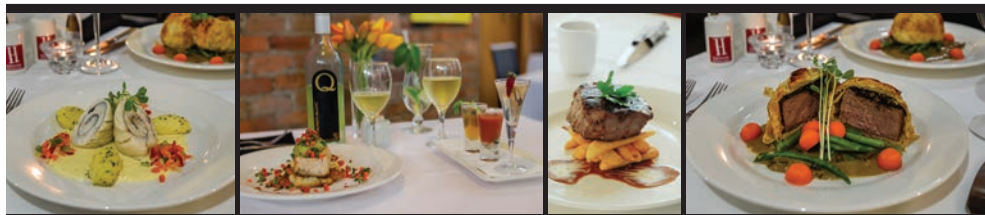
Ormerod Street, Naracoorte



HIGHLANDER RESTAURANT



DISCOVER SOMETHING UNEXPECTED



STEWART TERRACE | NARACOOORTE
P. 08 8762 1644 www.highlanderrestaurant.com.au

BLACKSMITHS CAFÉ



Blacksmiths Café is a favourite spot for locals and tourists to stop, relax and enjoy delicious homemade foods and the best coffees and teas the world has to offer.

Open Monday to Friday from 9am to 5pm.
Saturday 9am to 1pm.

Shop 6, Kincaid Plaza, Naracoorte
P 08 8762 0247
E eat@blacksmithscafe.com.au
W www.blacksmithscafe.com.au



SWEET ESPRESSO 5271



**Bricks and Mortar Coffee
Tea | Slices | Light Lunches**

Set in the heart of Naracoorte, Sweet Espresso offers the perfect spot to catch up with friends & family, friendly service & a relaxed atmosphere.

OPEN 7 DAYS

Mondays 7am - 3pm
Tuesday to Friday 7am - 5pm
Saturday & Sunday 8am - 1pm
Public Holiday's & Winter hours
as advertised via our social media

116 Smith Street, Naracoorte SA
P. 08 8762 0033



FARMER'S LEAP WINES



FARMER'S LEAP WINES

PADTHAWAY

Tasting - Sales - Coffee - Light Fare
Functions & Weddings
Open Daily 10am - 4pm

41 Hodgson Road, Padthaway
www.farmersleap.com

Book your cellar door visit online at
farmersleap.com/bookings
or call 8765 5251



NARACOORTE PIZZA HOUSE

NARACOORTE

PIZZA - HOUSE -

OPEN DAILY FROM 4.30PM
PICK UP OR DELIVERY



8762 1933




BUSHMAN'S ARMS HOTEL




bushman's arms
hotel

Country Bar - Great Food - Friendly Atmosphere!

- Community minded country hotel with 7-day dining inside and alfresco
- Mr Yum online ordering available for dine in and takeaway
- Great bar atmosphere with TAB and Keno facilities
- AHA winner 'Best Country Gaming Venue' 2022
- Comfortable and affordable hotel rooms with own ensuite
- Sip'n Save Bottle shop

 @bushmansarmshotel

 www.facebook.com/bushmansarmsnaracoorte

20 Robertson Street, Naracoorte 5271

Phone 08 8762 2100

Email admin@bushmansarmshotel.com.au



BLACK COCKATOO BUSH CAMP



Experience bush walking, bird watching and enjoy the flora and fauna in 120ha. virgin scrub.

Camp beneath shady gum trees beside a water hole stocked with fish and yabbies. Bunkhouse accommodation available.

BBQ's, flush toilets, hot showers and limited powered sites in a natural setting.

Make your own wood fired pizza.

Relax and take in the beautiful scenery.



Enquiries and Bookings: 0428 621 613

Telephone (08) 8762 1612 - Mobile 0428 621 612

Email: blackcockatoobushcamp@hotmail.com

www.blackcockatoobushcamp.com.au

NARACOORTE HOLIDAY PARK

Stay & Save 12.5%

at any of our Sister Parks
when travelling on to further adventure!



08 8762 2128 | naracoorteholidaypark.com.au



08 8541 2651



08 8632 4275



08 8595 5131



08 8261 1091

NARACOORTE HOTEL MOTEL

**OPEN
7 DAYS**

Naracoorte
HOTEL MOTEL

Welcome to the Naracoorte Hotel Motel, your number one stop for eating, drinking and accommodation in the South East of South Australia.

We have got something for everyone, with our Billy Mac's Bistro serving the finest meals using fresh local produce, our convenient bottle shop, comfortable gaming lounge, sports bar with TAB facilities, regular live music, function rooms and a choice of accommodation options.



73 Ormerod Street, Naracoorte | Phone 08 8762 2400

naracoortehotel.com.au | info@naracoortehotel.com.au

WILLIAM MACINTOSH MOTOR LODGE



MOTOR LODGE



**AWARD WINNING HIGHLANDER RESTAURANT
OPEN 7 DAYS FOR BREAKFAST & DINNER!**

- Fully licensed bar & restaurant
- 30 units including spa units
- 2 bedroom family unit
- Disabled access room
- Free WiFi
- Room service & mini bar

Stewart Terrace, Naracoorte SA
P 08 8762 1644 E info@william-macintosh.com.au
www.william-macintosh.com.au



2A GLOBE STREET



2A GLOBE STREET NARACOORTE

Offers 2 large bedrooms, stylish kitchen
with all the comforts of home.

Enjoy the included breakfast provisions.

Contact your host Kirillie

P 0429 231 273

E kkmurray1975@gmail.com

<https://airbnb.com/h/2aglobestreet>

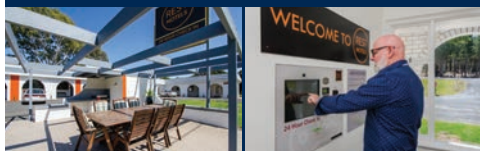


REST MOTELS NARACOORTE



NARACOORTE

24 hour check in



18 Stewart Terrace, Naracoorte SA

P 08 8762 2599

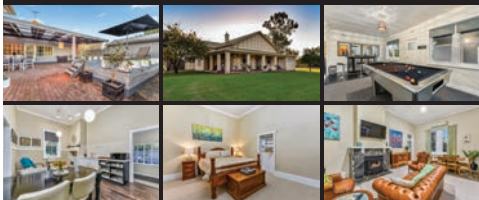
W www.restmotels.com.au



THE JAZZ BED & BREAKFAST

The Jazz

Bed Breakfast Venue



- Limestone villa in tranquil surrounds
- Modern art & period furniture
- Four luxurious bedrooms
- Flat-screen smart tv's & Free wi-fi
- 5 star games room
- Extensive outdoor entertaining
- Venue for your next celebration.

2 Messamurray Road, Naracoorte SA

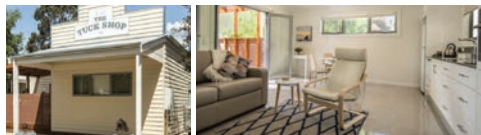
P 08 8762 1660 E info@thejazz.com.au

www.thejazz.com.au



THE TUCK SHOP

THE TUCK SHOP B&B



Situated in a quiet leafy street, a short stroll to the town centre, our modern fully self contained queen bedroom apartment allows you to be accommodated in style.

Features include:

- Continental breakfast provisions including yoghurt and fresh seasonal fruit.
- Year-round comfort, RC air conditioning, bedroom ceiling fan and good ventilation
- TV/DVD, filtered rainwater, full laundry facilities and a car port for smaller cars.
- French doors opening to a N-E facing al fresco decking with Weber BBQ.

Be surprised by the understated elegance!

4 Peake Crescent, Naracoorte
Marie: 0413 488 142 Peter: 0458 529 849
Email: mariedavis57@hotmail.com



KARRAWIRRA COTTAGE

KARRAWIRRA COTTAGE



This delightful 2 bedroom retreat while in a quiet street, is close to the town centre. Continental breakfast provisions include yoghurt and fresh seasonal fruit. Alternatively, you may cook up a treat with the Weber BBQ in the al fresco area or by utilising the fully equipped kitchen with dishwasher.

Other features include:

- Open plan living, TV/DVD, RC air conditioning and good ventilation
- Comfortable QS bedrooms with ceiling fans
- Filtered rainwater plus full laundry facilities
- A car port enabling easy access to the rear of the cottage

6 Peake Crescent, Naracoorte
Marie: 0413 488 142 Peter: 0458 529 849
Email: mariedavis57@hotmail.com



OTTOSON REAL ESTATE



Ottoson REAL ESTATE **home of**
PARTNERS

LIMESTONE COAST HOLIDAY rentals

Specialising in holiday rentals PLUS residential, rural and commercial real estate sales across the Limestone Coast.
Independent ownership – Professional knowledge – Satisfied clients
Contact us today www.ottoson.com.au

Naracoorte
19 Ormerod Street
Ph. 08 87620070

Robe
9 Victoria Street
Ph. 08 87682600





THE AVENUE INN

Situated in a quiet leafy location this newly renovated venue is perfect for business travellers and tourists. Comfortable, well appointed accommodation with ample parking.

The Avenue boasts 15 clean, modern and stylish motel rooms and 3 newly built 2-bedroom apartments. Located in the quiet heart of suburbia The Avenue Inn also houses a cafe and restaurant.

Apartments

- Are self-contained with a 58" smart TV
- An open-plan Lounge/Dining Room
- A full-sized kitchen
- Washer-dryer with an outdoor patio
- inbuilt wardrobe and 32" smart TV in each bedroom

Rooms come equipped with

- Free high-speed WiFi
- Parking in front of the room
- A mini fridge
- Kettle, Toaster, and Ironing Board

WEEKEND DESTINATION CAFE

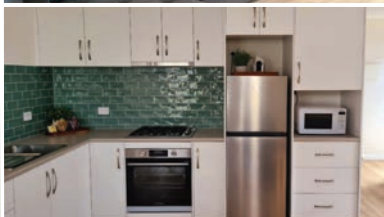
8:30am - 2:00pm

BREAKFAST

Wed - Fri: 7:00am - 10:00am

DINNER

Wed - Sat: 5:30pm - 8:00pm



17 Fourth Avenue, Naracoorte | Phone 08 8743 4374
www.theavenueinn.net | bookings@theavenueinn.net



Shopping

Retail therapy in Naracoorte is definitely a unique and pleasurable experience, with most shops locally owned, offering personal service and local knowledge.

Our retailers personally select their stock and offer locals and visitors an extensive and eclectic range of life's necessities and unusual treasures.

Fashionistas will be pleasantly surprised at the diverse range on offer - clothing for all ages and tastes, ranging from the country chic of RM Williams to surf wear and current fashions for every age group.

For the thrifty visitors, our Op Shops offer fun for bargain hunters. A diverse mix of gifts and homewares can be found in the

Smith and Ormerod Streets precinct which borders our picturesque town squares.

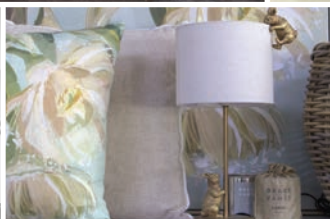
Well-known supermarkets such as Woolworths and Foodland are complemented by smaller, specialist providers, including the Daily Market grocery store which offers a fascinating array of Asian and Middle Eastern produce.

Besides a supermarket, Kincaig Plaza hosts a number of interesting retail and service businesses.

There is no need to rush your shopping experience. Take a break at one of the many cafes, bakeries or fast food stores to recharge your shopping enthusiasm.



NARACOORTE HOMEMAKERS



Naracoorte homemakers

Leaders in service and style Naracoorte Homemakers is the destination to find unique and quality homewares, furniture and bedding.

Stocking an extensive range of quality furniture including beautiful timber dining, luxurious leather sofas and IMG comfort recliners and lounges. To make life easier we also stock a large range of adjustable beds and multifunction lift chairs.

Let our expert team advise on which mattress or chair is right for you! Offering layby options* and up to 48 month's interest free*. Naracoorte Homemakers, locally owned, open 6 days and delivering right across the Limestone Coast.

 **4 Magarey Crescent, Naracoorte SA 5271**
 **P. (08) 8762 1500**
 **www.homemakersfurniture.com.au**

**Terms & conditions apply*

**Interest free finance to approved applicants only*

THE LAUNDRY HUB



Live Laugh Love



PETITE FRENCH INSPIRED GIFT STORE

Quality clothing, jewellery & unique homewares, something for everyone!

Open Mon - Fri: 10am - 5pm

Sat: 9am - 12 noon.

Laundrette Open 7 days 7am - 10pm

5 Ormerod Street, Naracoorte SA

P 08 8762 0699

KINCRAIG PLAZA



KINCRAIG PLAZA

26 - 32 ROBERTSON STREET, NARACOORTE

Woolworths
the fresh food people



OPEN 7 DAYS A WEEK

Monday - Saturday: 7am-9pm

Sunday: 8am-8pm

NOW OFFERING HOME DELIVERY (08) 8760 2200

Your local bottleshop



BEER WINE SPIRITS

OPEN 7 DAYS A WEEK

Monday - Saturday: 9am-8pm

Sunday: 9am-6pm

(08) 8760 2203

Experience **Elders** Real Estate

Shop 5, Kincraig Plaza
E: naracoorte@elders.com.au
P: (08) 8762 7900

Offering residential & rural sales, residential & commercial property management, water licensing & free appraisals across SA & West Wimmera.



Shop 6, Kincraig Plaza
Phone: (08) 8762 0247

eat@blacksmithscafe.com.au
www.blacksmithscafe.com.au



Newspapers, Magazines & Cards

Kiosk 1, Kincraig Plaza
Phone: (08) 8762 0023

People's Choice

Shop 7/8, Kincraig Plaza
Phone: (08) 8762 5000

Banking for life



Galaxy Thai & Asian Takeaway
Shop 4A, Kincraig Plaza

E: galaxythai.co@gmail.com P: 0434 095 242



'Quality Family Butcher'

Shop 2, Kincraig Plaza
Phone: (08) 8762 3022

AMALI GIFTS & ACCESSORIES



A lifestyle store with a little bit of everything...

CLOTHING • HOMEWARES • SHOES • JEWELLERY • BAGS + WALLET

53 ORMEROD STREET, NARACOORTE SA P. 08 8762 1336

WWW.AMALIGIFTS.COM.AU

TERRY WHITE CHEMMART



**TerryWhite
Chemmart®**

PHARMACY OF THE YEAR 2019!

Friendly, caring service from our two full time pharmacists, plus an in store nurse on Mondays and Fridays. You'll even find a Parent's Room to feed or change your baby.

We stock a huge range of beauty products, fragrances, HomyPed Shoes and of course, all of your Pharmacy needs.

At Terry White Chemmart we treat you with genuine care.

110-112 Smith Street, Naracoorte SA
P 08 8762 2158 F 08 8762 0662



LIMESTONE COAST MOTORCYCLES



THE IDEAL MAN'S SHOP!

LIMESTONE COAST MOTORCYCLES

MOTORCYCLES | SMALL ENGINES | BICYCLES

Servicing of all types of motorcycles, power engines & bicycles.

Selling motorcycle accessories, power equipment & bicycles.

46 Sandstone Avenue

P 08 8762 2888

E info@lscmotorcycles.com.au



OFFICE NATIONAL LIMESTONE COAST

**Your one stop shop for all
your communication needs**



Office National

Limestone Coast



MOBILES | LAPTOPS | ACCESSORIES

P. 8762 4999 | 65 Smith Street, Naracoorte
Opposite the Police Station

HEARDS MENSWEAR



Quality Menswear & Accessories
Suiting, Formal Wear, Fashion Apparel
Jeanswear & Workwear
Career Apparel & Logo Embroidery a speciality

Opening Hours

Monday - Friday: 9am-5pm

Saturday: 9am-12pm

Sunday: Closed

P: 08 8762 2326 F: 08 8762 3170

E: angela@heardsmenswear.com.au

114 Smith Street Naracoorte SA 5271



ATTWOODS SHOE STORE

LADIES AND MENS

"Good and better shoes"



ABN 63 320 877 007

Attwoods

Shoe Store

Naracoorte • Penola • Mount Gambier

(08) 8762 3726

80 Smith Street Naracoorte 5271



SOUTH EAST WHEEL ALIGNMENT & TYRE SERVICE

KUMHO TYRE

All-Ways, Go With you



SE WHEEL ALIGNMENT & TYRE SERVICE

08 8762 0000 - admin@sewats.com.au

2 Deviation Road, Naracoorte SA 5271

"Your wheel alignment & tyre specialist!"

ASI OUTDOORS



ASI OUTDOORS

- BOATING
- MARINE
- FISHING
- CAMPING
- OUTDOORS

90 Smith Street, Naracoorte SA
P 08 8762 2226
 Einfo@asioutdoors.com.au



TREV'S BARGAIN EMPORIUM



Trev's Bargain EMPORIUM

OPEN 7 DAYS

**Art & Craft, Stationery, Homewares, Cards & Wrap, Garden,
 Hardware, Pet & Toys and much more!**

41-43 Ormerod Street Naracoorte

P. 08 8762 3177



Hutchisons NURSERY

**NURSERY AND CAFE
OPEN 7 DAYS**

72 Stewart Terrace, Naracoorte SA 5271

- Largest range of indoor and outdoor plants, aquarium and pet supplies, landscaping supplies
- Expert advice and quality stock
- Cafe serving coffee, tea, cold drinks cake and light lunches



EMPORIUM ROSE VINTAGE WARES


EMPORIUM ROSE VINTAGE WARES

*"My love of everything old and quirky inspired me to open my shop in 2022.
I love meeting like minded people who tell me what they love collecting
and the thrill of the find... the best antiques are old friends."*

Rosemary Nolan

P: 0422 558 612 E: emporiumrosevintagewares.com.au

1 Macdonnell Street Naracoorte

 **Follow me on Facebook for opening times.**



TRENDS OF NARACOORTE



trends of naracoorte

Womens lifestyle clothing Sizes 8-20+

Leah Davenport

82 Smith Street
Naracoorte 5271

p: 0439 340 539

e: trends82@outlook.com

f trends of naracoorte



NARACOORTE LUCINDALE

Heart of the Limestone Coast

Home of the World Heritage listed Naracoorte Caves and Bool Lagoon,
a Ramsar Wetland of International Significance



Naracoorte Visitor Information Centre

MacDonnell Street, Naracoorte

Telephone: 08 8762 1399

Email: naracoortevic@nlc.sa.gov.au

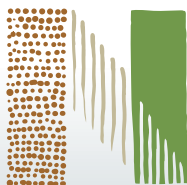
Naracoorte Lucindale Council

Better by Nature



www.naracoortelucindale.com





Naracoorte Business Association

Ancient history, amazing landscapes and a vibrant town.
We welcome you to explore everything this
region has to offer.

EAT – SHOP – STAY – PLAY – EXPLORE



Follow us on



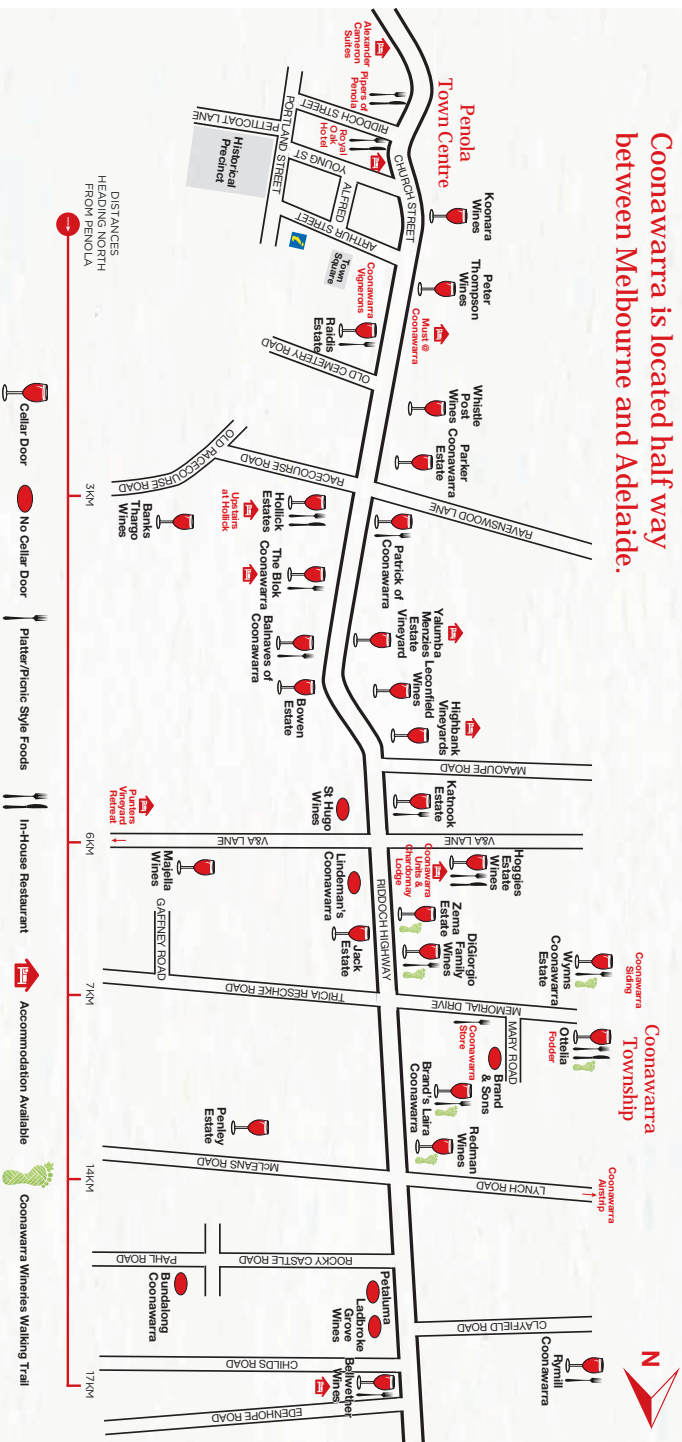
Email: info@naracoorteba.com.au

Wine Trail

Mt Gambier	52km
Melbourne	450km

Coonawarra is located half way between Melbourne and Adelaide.

Aracoorte	28km
Adelaide	375km



*Some cellar doors provide food options. Some are by appointment only. Refer to larger Coonawarra Wine Trail Map or view at www.coonawarra.org

COONAWARRA \

**"Coonawarra...it's a place that get's under your skin,
leaving an indelible mark, for those who choose it as home,
and for those who visit us...and keep coming back."**

Discover the Coonawarra effect.

Visit **www.coonawarra.org** for details about visiting the region,
events throughout the year, and all our member wineries.

P. 08 8737 2392

E. enquiries@coonawarra.org

www.coonawarra.org



Day Trips

Once you've soaked up the local attractions, all the hidden treasures of the Limestone Coast are easily accessed by car; most are little more than an hour's drive away.

Be captivated by a world of natural wonders. Taste the abundant gifts of nature. The Limestone Coast offers premium wine regions, pristine wilderness destinations, stunning beaches and plenty of great experiences.

Mount Gambier and Port MacDonnell

- View the Blue Lake and drive or walk around the crater rim
- Visit the Umpherston Sinkhole, where the resident possums venture out to feed at night in the spectacular floodlit gardens
- Discover the spring-fed limestone ponds at the Ewens Ponds Conservation Park by snorkelling along the shallow channels or scuba diving into the ponds
- Enjoy a naturally cool swim in a beautiful natural water filled sinkhole at the Little Blue Lake

Keith and Bordertown

- Take a 'selfie' with the bronze bust of Bob Hawke at the Bob Hawke Gallery which features a collection of memorabilia acknowledging and celebrating Bordertown as the birth place of our former Prime Minister
- Visit historic Mundulla, just 10 kilometres south west of Bordertown

Millicent

- Drive the Woakwine Range Wind Farm Tourist Drive, the largest wind farm development in the Southern Hemisphere
- Visit Mount Muirhead, Mount Burr, Lake Leake and Lake Edward – all important components of the Kanawinka Global Geopark
- Admire the beauty of Tantanoola Cave, a single chamber, dolomite cave

The Limestone Coast is perfect to visit any time of year with the Naracoorte Lucindale district in the heart of the region as your base!

For more information visit www.naracoortelucindale.com or drop in to the Naracoorte Visitor Information Centre.



Kingston, Robe and Beachport

- Enjoy the beautiful serene and sandy beaches, ideal for swimming, fishing, surfing, sail boarding and sailing
- Indulge in local Southern Rock Lobster, fresh from the sea between November and late April
- Visit the local wineries at the Mount Benson, Cape Jaffa and Robe wine regions
- Explore Canunda National Park, Coorong National Park or Little Dip Conservation Park

Penola and Coonawarra

- Sample award-winning wines at one of the many cellar doors
- Learn about Saint Mary MacKillop and Father Julian Tenison Woods at the Mary MacKillop Penola Centre



Design and printing

Hansen Design & Print • www.hansenprint.com.au

Photo acknowledgments

Steve Bourne, Ian Fisk, The Naracoorte Herald, Malcolm McEachern, SATC and others.

Disclaimer Hansen Design & Print (Publisher), Naracoorte Lucindale Council and Naracoorte Lucindale Business & Tourism including its officers, agents and contractors have made every effort to ensure all details in the Naracoorte Lucindale Visitor Guide are correct at the time of printing, but accept no responsibility for any inaccuracies or misdescriptions whether by inclusion or omission, nor any responsibility for subsequent change or withdrawal of products, services or details shown which are subject to alteration without notice. Images and information may not be reproduced without prior written permission from the publisher. Published July 2023.



AUSTRALIA'S FAVOURITE WOOL BEDDING PRODUCTS

SINCE 1975

Improving your lifestyle...with wool

Come and see where MiniJumbuk make their world famous woollen bedding products. Visit the shop to find factory direct prices, along with souvenirs and quality sheepskin footwear.

**OPEN
7 DAYS**

Mon - Fri 8.30 - 5.30

Sat 9.00 - 4.00

Sun & Public Holidays

10.00 - 4.00



08 8762 3677

61 Smith Street, Naracoorte, SA 5271
info@minijumbuk.com.au | minijumbuk.com.au

